

# Dimmable LED Drivers

- Grow lighting
- Street lighting
- Stadium lighting
- Industrial lighting
- Architecture lighting

**MAGTECH**  
The Power To Drive Innovations

5625-A Arville ST. Las Vegas, NV 89118  
(702) 364 - 9998  
csupport@magtechind.com

Rev. 02122024



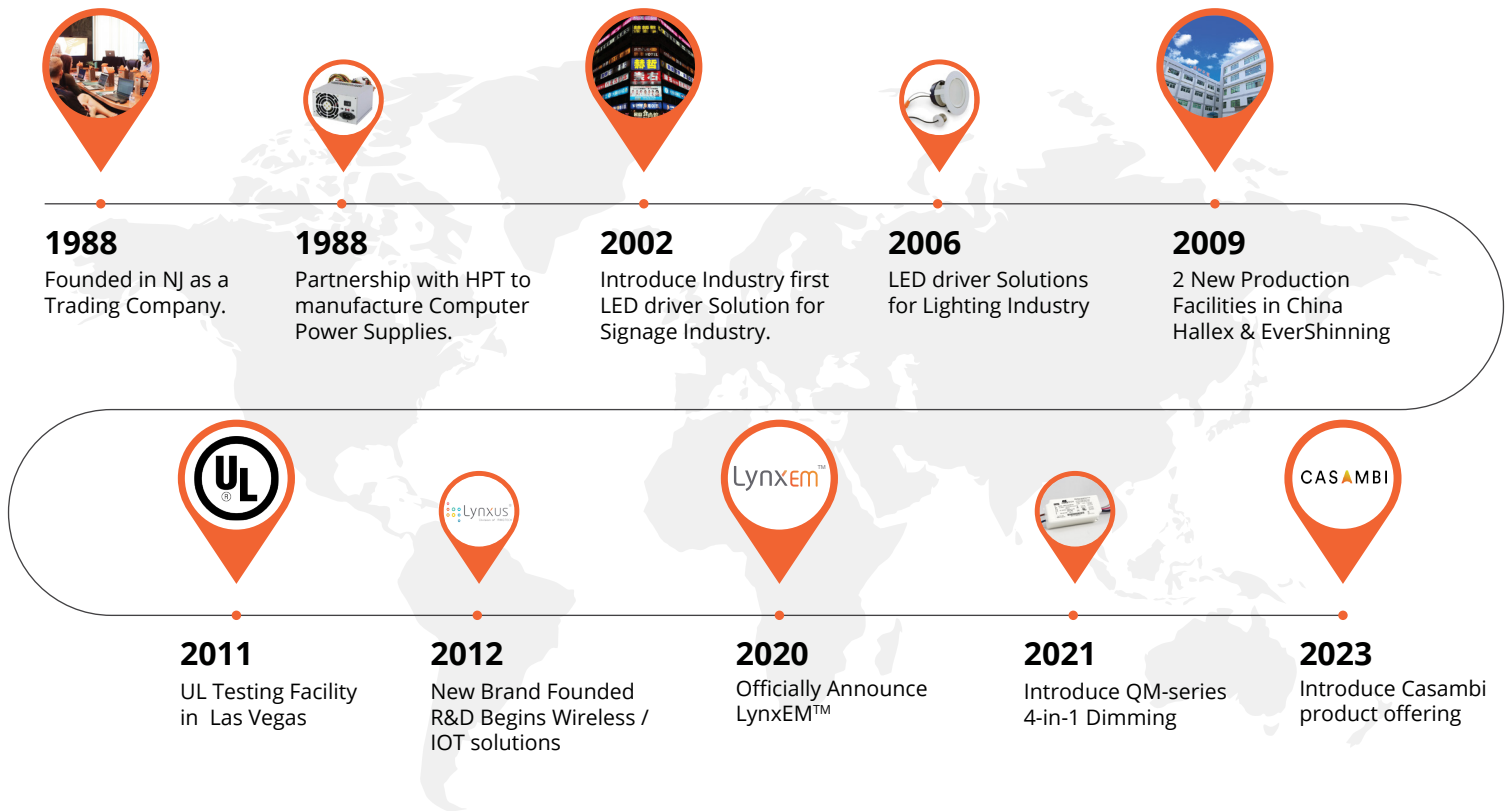
# Product Series

	Pages
Q Series -----	02
M Series -----	02
MD Series -----	03
MDH Serres -----	03
QM Series -----	04
DA-010 Converter -----	04
DA-020 Converter -----	05
LD Series -----	05

## Wireless Compatible

Atom In-wall Switch -----	06
ZBA-T001 -----	07
QM Series -----	07

## Key Milestones



## HISTORY AND BASE TECHNOLOGIES

- Since 2002, we have switched runway from commercial IT power supply to support of lighting industry and focus on switching-model LED driver designs
- The very first design was a 60-100W, UL Class 2, constant power design for signage applications with IP67 ingress rating
- In the same year, we start making DC/DC buck driver for single LED applications
- The LP-series was launched in 2003 based on single stage fly-back design
- LD series was launched in 2005 for first generation of general lighting industry
- The M-series was launched in 2007 using PSR topology
- In 2008, we were the first manufacturer introducing “phase-cut, trailing-edge” dimmable LED driver
- Most of our designs are UL Class 2 with PSR topologies at that moment
- MCA-series is the first dual-stage design based on UL8750 non-class 2 and Class 2; ranged from 75W to 600W
- Future design will be focus on modular design concept to include variable control protocols
- NFC programmable output is available
- Phase-cut dimming methods has been perfected for both CC and CV outputs
- Multi-function /multi-features are focuses move forward to compete with lower end competitors

# The Power to Drive Innovation

## Magtech Industries Corporation

### Available LED Driver Models



#### Q Series

- Available in plastic and metal (stud-mountable) design
- Constant current and constant voltage available.
- Compatible with 0-10V dimmers; source and sink
- UL8750 Class 2 / CE certified
- Full range AC input from 110-277VAC
- Dry & damp location; 0-10V Dimming



Model	# of Output	Output Type	Output	Max. Output	Aux.	Programmable	Max. Power	Dimming Methods					Control				Case Style			Safety Approval	
			(VDC)	(mA)			(Watts)	TRIAC	ELV	0-10V	PWM	Dim %	Casambi	ZigBee	DALI2	D4i	Plastic	Metal	Aluminum		
Q12	1	CC/CV	12-54	1300		N	12				•							•	•		cUL, CE
Q22	1	CC/CV	12-54	2500		N	25				•							•	•		cUL, CE
Q38	1	CC/CV	24-72	1850		N	40				•							•	•		cUL, CE
Q48	1	CC/CV	24-72	2200		N	50				•							•	•		cUL, CE
Q58	1	CC/CV	24-72	2650		N	60				•							•	•		cUL, CE
Q68	1	CC/CV	24-72	3150		N	70				•							•	•		cUL, CE

#### Dimension: Page 08

Q12-XM, Q22-XM: 121 x 42 x 29mm  
 Q12-XP, Q22-XP: 85.3 x 37.9 x 27.7mm  
 Q38-XM, Q48-XM, Q58-XM, Q68-XM: 138 x 47 x 32mm  
 Q38-XP, Q48-XP, Q58-XP, Q68-XP: 127.3 x 30 x 76.3mm



#### M Series

- Low cost single stage design
- Constant current available
- Compatible leading & trailing phase-cut dimmers.
- UL/ CE certified
- Full range AC input from 110-277VAC
- Dry & damp location; Multipurpose



Model	# of Output	Output Type	Output	Max. Output	Aux.	Programmable	Max. Power	Dimming Methods					Control				Case Style			Safety Approval	
			(VDC)	(mA)			(Watts)	TRIAC	ELV	0-10V	PWM	Dim %	Casambi	ZigBee	DALI2	D4i	Plastic	Metal	Aluminum		
M9	1	CC	9-30	750		N	10	•	•									•			cUL, CE
M18	1	CC	10-30	830		N	22	•	•									•			cUL, CE
M28	1	CC	15-54	1250		N	30	•	•									•	•		cUL, CE
M38	1	CC	15-54	1660		N	40	•	•									•	•		cUL, CE
M48	1	CC	15-54	2090		N	50	•	•									•	•		cUL, CE

#### Dimension: Page 09

M9 Series : 70.5 x 34.5 x 25mm  
 M18 Series : 85.3 x 38 x 27.7mm  
 M28-XM & M38-XM Series : 121 x 42 x 29mm  
 M28-XP & M38-XP Series : 88 x 41 x 30mm  
 M27-XP Series : 71 x 41 x 29mm  
 M48-XP Series : 138 x 47 x 41.3mm



### MD Series



- Full range AC input 110-277VAC, 60/50Hz
- Constant current outputs
- Deep dimming level as low as 1%
- UL 8750 Class 2 Class P certified with HL mark
- Compact size suitable for dry and damp locations
- Dry & damp location; TRIAC/ ELV dimmable

Model	# of Output	Output Type	Output	Output Current	Aux.	Programmable Output	Max. Power (Watts)	Dimming Methods					Control				Case Style			Safety Approval				
			(VDC)	(mA)				TRIAC	ELV	0-10V	PWM	Dim %	Casambi	ZigBee	DALI2	D4i	Plastic	Metal	Aluminum					
MD22-U24-yyyy-Xz	1	CC	14-24	500-250		N	10														cUL, CE			
MD22-U30-yyyy-Xz			16-30	400-200																				cUL, CE
MD22-U36-yyyy-Xz			20-36	350-170																				cUL, CE
MD22-U42-yyyy-Xz			27-42	300-150																				cUL, CE
MD22-U54-yyyy-Xz			36-54	250-120																				cUL, CE
MD22-U54-yyyy-Xz			14-24	1000-500						20													cUL, CE	
MD22-U30-yyyy-Xz			16-30	770-400																				cUL, CE
MD22-U36-yyyy-Xz			20-36	670-340																				cUL, CE
MD22-U42-yyyy-Xz			27-42	580-290																				cUL, CE
MD22-U54-yyyy-Xz			36-54	450-230																				cUL, CE
MD42-U24-yyyy-Xz	1	CC	14-24	2000-1000		N	40														cUL, CE			
MD42-U30-yyyy-Xz			16-30	1540-800																				cUL, CE
MD42-U36-yyyy-Xz			20-36	1340-670																				cUL, CE
MD42-U42-yyyy-Xz			27-42	1150-580																				cUL, CE
MD42-U54-yyyy-Xz			36-54	890-450																				cUL, CE

**Dimension: Page 10**

MD22-XM Series: 121 x 1.65 x 29mm  
 MD22-XM Series: 85.3 x 37.9 x 27.7mm  
 MD42-XM Series: 114 x 42 x 29mm  
 MD42-XM Series: 88 x 41 x 34.8mm



### MDH SERIES



- Input voltage 100 - 277V (UL)
- Full dimming range: 5-100%
- High Efficiency, High Power Factor, Low THD; Flicker-free
- Silicon Potting
- Water level: IP65
- RoHS Compliance
- 3-in-1 dimming, leading & trailing edge & 0-10V compatible.

Model	# of Output	Output Type	Output	Output Current	Aux.	Programmable Output	Max. Power (Watts)	Dimming Methods					Control				Case Style			Safety Approval	
			(VDC)	(mA)				TRIAC	ELV	0-10V	PWM	Dim %	Casambi	ZigBee	DALI2	D4i	Plastic	Metal	Aluminum		
MDH22-45-0200-S7D	1	CC	24-42	200		N	20					3%									cUL, CE
MDH22-45-0250-S7D	1	CC	24-42	250		N	20					3%									cUL, CE
MDH22-45-300-S7D	1	CC	24-42	300		N	20					3%									cUL, CE
MDH22-45-350-SD7	1	CC	24-42	350		N	20					3%									cUL, CE
MDH22-45-400-SD7	1	CC	24-42	400		N	20					3%									cUL, CE
MDH22-45-450-SD7	1	CC	24-42	450		N	20					3%									cUL, CE
MDH22-45-500-SD7	1	CC	24-42	500		N	20					3%									cUL, CE
MDH22-45-550-SD7	1	CC	21-36	550		N	20					3%									cUL, CE
MDH42-24-YYYY-S8D	1	CC	13-24	500-900		N	21.6					3%									cUL, CE
MDH42-36-YYYY-S8D	1	CC	21-36	500-900		N	32.4					3%									cUL, CE
MDH42-45-YYYY-S8D	1	CC	27-42	500-900		N	40.5					3%									cUL, CE
MDH62-24-YYYY-S9D	1	CC	13-24	900-1400		N	33.6					3%									cUL, CE
MDH62-36-YYYY-S9D	1	CC	21-36	900-1400		N	50.4					3%									cUL, CE
MDH62-45-YYYY-S9D	1	CC	27-45	900-1400		N	63					3%									cUL, CE
MDH62-54-YYYY-S9D	1	CC	36-54	700-1100		N	59.4					3%									cUL, CE

**Dimension: Page 11**

MDH22 : 80.4 x 36.2 x 23.1mm  
 MDH42 : 90.4 x 40.2 x 28.1mm  
 MDH62 : 149.8 x 40 x 30mm

## QM Series

Plastic



Metal



- TRIAC/ELV/0-10V/PWM CV and CC mode dimming with full AC input from 110-277VAC
- Fully programmable output
- Turn on timing less than 500 ms
- UL 8750 Class 2 Class P Listed certification,
- Flickering Rate less than 10% at 120 HZ
- No load power consumption- less than 0.5 W (1W with wireless control)
- Isolation dimming circuit- Isolated from both primary and secondary circuits
- Dimming percentage less than 1%- with all 4 dimming methods
- Dual output available with 50W and 100W, pre-programmable dimming effects
- Wireless using ZigBee or Casambi - Optional
- Dry & damp location; 4-in-1 Dimming



Model	# of Output	Output Type	Output	Output Current	Aux.	Programmable	Max. Power	Dimming Methods					Control				Case Style			Safety Approval		
			(VDC)	(mA)				Output (Watts)	TRIAC	ELV	0-10V	PWM	Dim %	Casambi	ZigBee	DALI2	D4i	Plastic	Metal		Aluminum	
QM20-U48-yyyy-XP	1	CC	20-48	625-300		USB	20	•	•	•	•	1%	Optional	Optional			•				UL, CE	
QM-20-Uxx-XP	1	CV	12 or 24	1660 / 830		N/A		•	•	•	•	1%	Optional	Optional			•					
QM32-U48-yyyy-XX	1	CC	Oct-48	500 - 1050		NFC	32	•	•	•	•	1%	Optional	Optional			•				cUL, CE	
QM32-U24-zz	1	CV	24	1330		N/A		•	•	•	•	1%	Optional	Optional			•					
QM40-U48-yyyy-XP	1	CC	20-48	1250-250		DIP Switch	40	•	•	•	•	1%	Optional	Optional			•				UL, CE	
QM40-U24-XP	1	CV	24	1660		N/A		•	•	•	•	1%	Optional	Optional			•					
QM50-U48-yyyy-XP	1	CC	20-48	1900-250		DIP Switch	50	•	•	•	•	1%	Optional	Optional			•				UL, CE	
QM50D-U48-yyyy-XP	3	CC	20-48	1250-250	•	DIP Switch		•	•	•	•	1%	Optional	Optional			•					
		CV	12	200		N/A		•	•	•	•	1%	Optional	Optional			•					
QM50-U24z-XP	2	CV	24	1900	•	N/A		•	•	•	•	1%	Optional	Optional			•					
		CV	12	200																		
QM100-U48-yyyy-XP	1	CC	20-48	4100-2000	•	NFC	100	•	•	•	•	1%	Optional	Optional					•		UL, CE	
		CV	12	200		N/A		•	•	•	•	1%	Optional	Optional								
QM100D-U48-yyyy-XM	3	CC	20-48	4100-2000	•	NFC		•	•	•	•	1%	Optional	Optional					•			
		CV	12	200		N/A		•	•	•	•	1%	Optional	Optional								
QM100-U24z-XP	2	CV	24	4100	•	N/A	•	•	•	•	1%	Optional	Optional					•				
		CV	12	200																		

### Dimension: Page 11 - 13

QM20 Series: 85.3 x 37.9 x 27.7mm  
 QM32 Series: 224 x 31 x 16.5mm  
 QM40 Series : 88.6 x 41.6 x 30mm  
 QM50 Series : 107.5 x 43.5 x 32mm  
 QM70 Series : 168 x 47 x 31.5mm  
 QM100 Series: QM100-U48z-yyyy-LP, QM100-U24z-LP: 277.36 x 69 x 37.1mm  
 QM100-U48z-yyyy-BM, QM100-U24z-BM : 234.7 x 69 x 37mm  
 QM100-U48z-yyyy-MB, QM100-U24z-MB : 234.7 x 69 x 37mm  
 QM100-U48z-yyyy-SB, QM100-U24z-SB : 192 x 69 x 37mm

## DA-010 Converter For dry location



- Powered by DALI Bus voltage or external Class 2 DC source
- Output 0-10V current sink
- Convert DALI signal to 0-10V dimming signal
- IEC 62386 DALI-1 certified
- Compact size

Model	# of Output	Output Type	Output	Input Output	Aux.	Output	Sink Current	Compatibility	Control				Case Style			Safety Approval		
			(VDC)	(mA)			(VDC)		(mA)	Dim %	Casambi	ZigBee	DALI2	D4i	Plastic		Metal	Aluminum
DA-010	1	Linear	12-22.5	2		0-10	<2	DALI2 DT6				•		•				CE

### Dimension: Page 13

DALI-010 Converter: 57 x 40 x 20.5mm

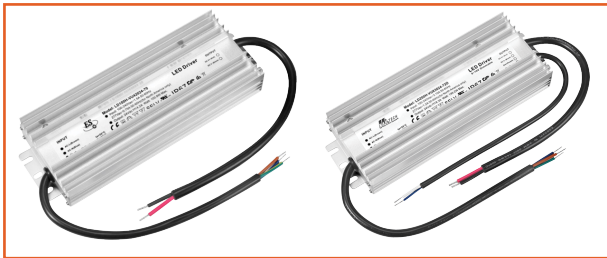


### DA-020 Converter For dry location

- Powered by DALI Bus voltage or external Class 2 DC source
- DALI Type 8 Command
- Output 0-10V current sink
- Convert DALI signal to 0-10V dimming signal
- IEC 62386 DALI-1 certified
- Compact size

Model	# of Output	Output Type	Output	Input Output	Aux.	Output	Sink Current	Compatibility	Control					Case Style			Safety Approval	
			(VDC)	(mA)		(VDC)	(mA)		Dim %	Casambi	ZigBee	DALI2	D4i	Plastic	Metal	Aluminum		
DA-020	1	Linear	12-22.5	2		0-10	<2	DALI2 DT8				•		•				CE

**Dimension: Page 13**  
DALI-020 Converter: 50 x 45 x 20mm



### LD Series Dry & damp location; Multipurpose

- Universal AC input range 90~305VAC
- Constant Voltage Operation
- Cooling by Free Air Convection (Metal Housing)
- Suitable for LED Strips and Moving Sign Applications
- Function options: 3 in 1 dimming (dim-to-off); DALI



Model	# of Output	Output Type	Output	Output Current	Aux.	Programmable	Max. Power	Dimming Methods					Control				Case Style			Safety Approval		
			(VDC)	(mA)				Output	(Watts)	TRIAC	ELV	0-10V	PWM	Dim %	Casambi	ZigBee	DALI2	D4i	Plastic		Metal	Aluminum
LD100H-VU83012-70(X)	1	CV	12	99.6			100			•	•	10%						•			cUL, CE	
LD100H-VU42024-70(X)	1	CV	24	100.8						•	•	10%							•			cUL, CE
LD100H-VU28036-70(X)	1	CV	36	100.8						•	•	10%							•			cUL, CE
LD100H-VU21048-70(X)	1	CV	48	100.8						•	•	10%							•			cUL, CE
LD200H-VU1K612-72(X)	1	CV	12	200.4			200			•	•	10%						•			cUL, CE	
LD200H-VU83034-72(X)	1	CV	24	199.2						•	•	10%							•			cUL, CE
LD200H-VU55036-72(X)	1	CV	36	198						•	•	10%							•			cUL, CE
LD200H-VU41548-72(X)	1	CV	48	199.2						•	•	10%							•			cUL, CE
LD300H-VU1K224-74(X)	1	CV	24	350			300			•	•	10%						•			cUL, CE	
LD300H-VU83336-74(X)	1	CV	36	400						•	•	10%							•			cUL, CE
LD300H-VU62548-74(X)	1	CV	48	500						•	•	10%							•			cUL, CE
LD400H-VU1K624-76(X)	1	CV	24	400.8			400			•	•	10%						•			cUL, CE	
LD400H-VU1K136-76(X)	1	CV	36	399.6						•	•	10%							•			cUL, CE
LD400H-VU83348-76(X)	1	CV	48	398.4						•	•	10%							•			cUL, CE

**Dimension: Page 14**  
LD100H : 230 x 80.3 x 33.5mm  
LD200H : 230 x 80.3 x 33.5mm  
LD300H: 223.2 x 98 x 38.5mm  
LD400H : 273.2 x 98 x 38.5mm

# Wireless Compatible Solutions

## ATOM WIRELESS IN-WALL SWITCH

### Available Standard, Non-neutral and Battery Operated

- Best low power load support, no bypass part or low power light adapter required.
- Default local circuit operate and do not require system control.
- 20dBm 2.4G for long range communication.
- Power failure memory to return to its previous set level prior to the interruption of power.
- Compatible to designer style wall plates or standard off-the-shelf wall plates.
- Fit in 1-gang U.S. wall-box ; 2 1/2" minimum depth recommended.
- Non-neutral design make installation easier (ZigBee only)



Line input



Battery

WS-	Q		R		ZZ		S		Y-		X-		T	
	RELAY FOR AC ON/OFF		LOCATION		NUMBER OF BUTTONS		NEUTRAL WIRE		WIRELESS COMMUNICATION PROTOCOL		0-10V DIMMING		FACE PLATE COLOR (Optional Note 1)	
WS	T	For Yes	A	For USA: 110 – 277VAC input	04	4 Buttons	0	Yes (With) for Zigbee or Bluetooth	1	Zigbee	0	No (Only option for Battery)	A1	Dark Chocolate
			E	For Europe: 230VAC input									A2	Warm Caramel
	N	For No (Only option for Battery)	C	For USA: Battery operated	06	6 Buttons	N	No (Without), for Zigbee only	2	Bluetooth	1	Yes	A3	Moon Rock
			D	For Europe: Battery operated									08	8 Buttons
			A5	Pebble Gray										
			A6	Off-White										
W	No face plate													

### Standard or Non-neutral

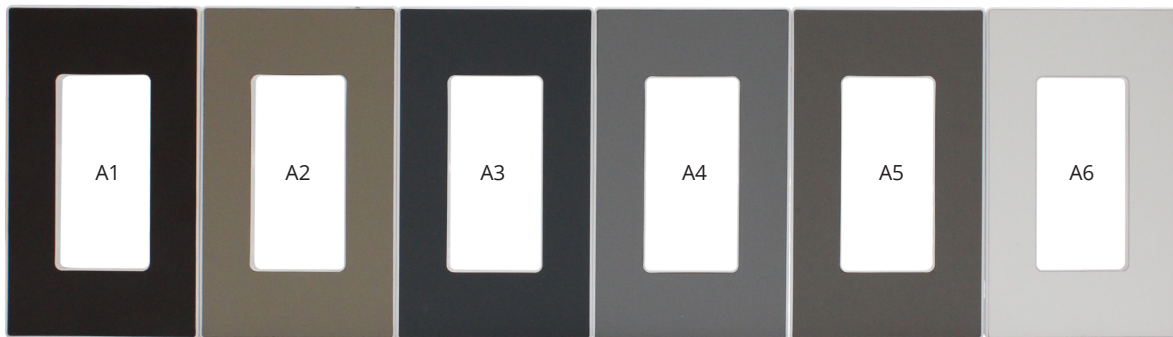


### Battery Operated



### Color face plate

Note: AC version, face plate is not included; Battery version, face plate is included A4 Silver Gray.



A1 Dark Chocolate

A2 Warm Caramel

A3 Moon Rock

A4 Silver Gray

A5 Pebble Gray

A6 Off-White





### ZBA-T001

- Basic control node in Zigbee or BT lighting control environment.
- Provide phase cut AC source to control fixture brightness
- Built-in On/Off feature will prevent any possible leakage
- Input 110VAC to 277VAC
- Dimming Control: Leading-Edge, Trailing-Edge, Selectable.

Dimension: Page 15

MODEL	NO. OF OUTPUT	OUTPUT (VDC)	MAX. POWER (WATTS)	DIMMING METHODS				CASE STYLE			UL Class
				TRIAC	ELV	0-10V	PWM	PLASTIC	METAL	ALUMINUM	
ZBA-T001-R	1	110-277		•	•	•	•	•			
ZBA-T001-F	1	110-277		•	•	•	•	•			
ZBA-T001-RB	1	110-277		•	•	•	•	•			
ZBA-T001-FB	1	110-277		•	•	•	•	•			

### QM Series

- TRIAC/ELV/0-10V/PWM CV and CC mode dimming with full AC input from 110-277
- Fully programmable output
- Turn on timing less than 500 ms
- UL 8750 Class 2 Class P Listed certification,
- Flickering Rate less than 10% at 120 HZ
- Wireless using ZigBee or Casambi
- Dry & damp location; 4-in-1 Dimming

MODEL	NO. OF OUTPUT	OUTPUT TYPE	OUTPUT (VDC)	OUTPUT (mA)	PROGRAMMABLE (OUTPUT)	MAX. POWER (WATTS)	CASE STYLE			UL Class	
						PLASTIC	METAL	ALUMINUM			
QM20-U48-yyyy-XPB	1	CC	20 – 48	625 – 300	DIP Switch	20	•				
QM20-Uxx-XPB	1	CV	12 OR 24	1660 / 830	N/A		•				
QM40-U48-yyyy-XPB	1	CC	20 – 48	1250 – 250	DIP Switch	40	•			•	
QM40-U24-XPB	1	CV	24	1660	N/A		•			•	
QM50-U48-yyyy-XPB	1	CC	20 – 48	1900 – 250	DIP Switch	50	•			•	
QM50D-U48-yyyy-XPB	3	CC	20 – 48	1250 – 250	DIP Switch		•				•
			20 – 48	1250 – 250							•
QM50-U24z-XPB	2	CV	24	1900	N/A		•				•
		CV	12	200							•
QM100-U48-yyyy-XPB	1	CC	20 – 48	4100 – 2000	DIP Switch	100	•		•		
QM100D-U48-yyyy-XMB	3	CC	20 – 48	4100 – 2000	DIP Switch						
			20 – 48	4100 – 2000							
		CV	12	200	N/A						
QM100D-U24z-XPB	2	CV	24	4100	N/A						•
		CV	12	200							

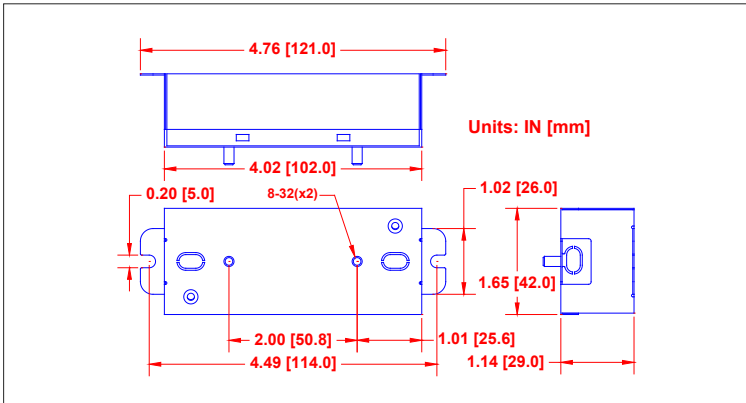
**NOTE:**  
B : Casambi Compatible

# Product Dimensions

## LD Series (L x W x H) Units: IN [mm]

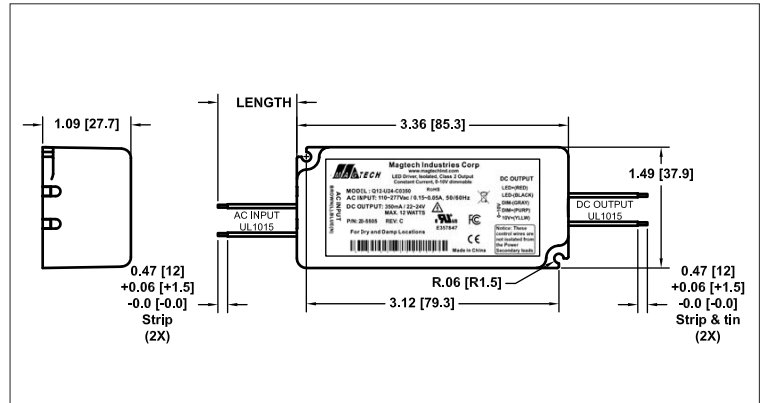
Q12-XM, Q22-XM: 121 x 42 x 29mm

"XM" – Stud-mountable Metal Case Enclosure



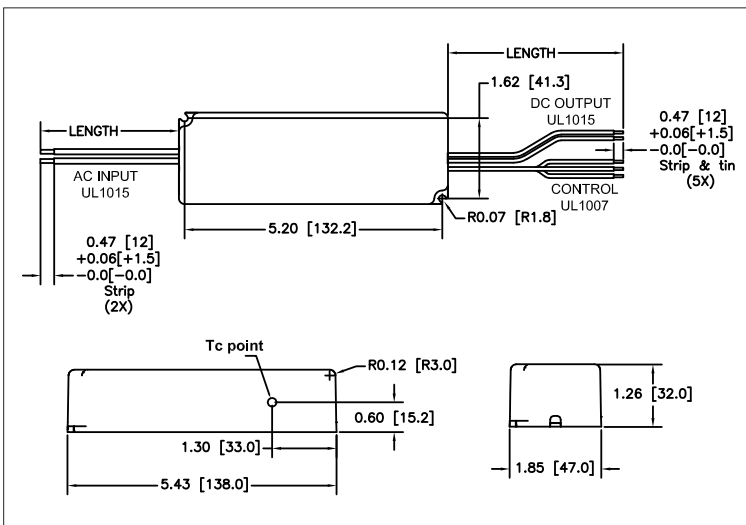
Q12-XP, Q22-XP: 85.3 x 37.9 x 27.7mm

"XP" – Plastic Case Enclosure



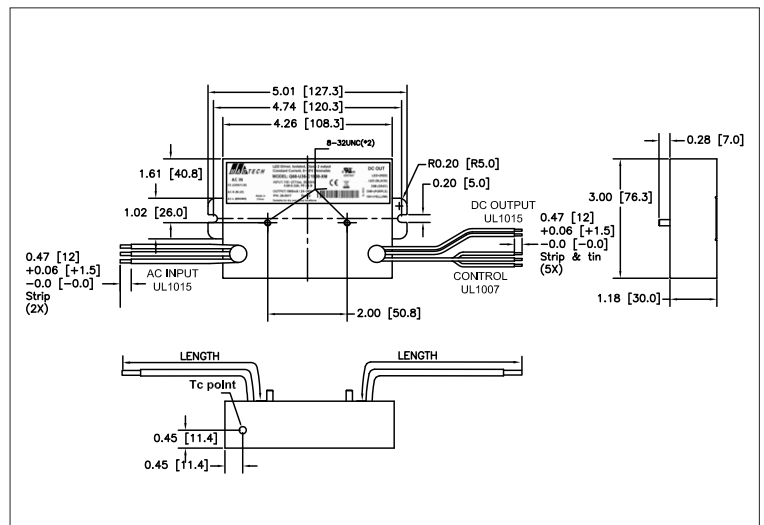
Q38-XM, Q48-XM, Q58-XM,  
Q68-XM: 138 x 47 x 32mm

"XM" – Stud-mountable Metal Case Enclosure



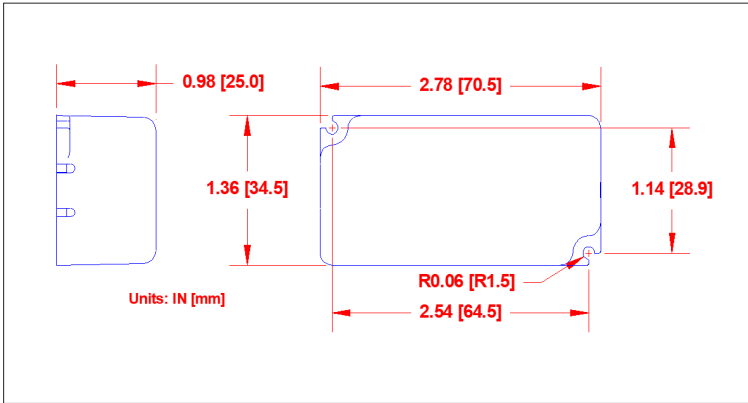
Q38-XP, Q48-XP, Q58-XP,  
Q68-XP: 127.3 x 30 x 76.3mm

"XP" – Plastic Case Enclosure

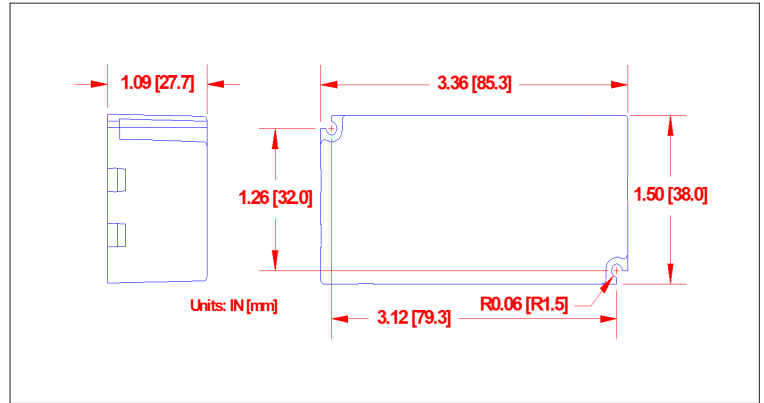


# M Series Dimension (L x W x H) Units: IN [mm]

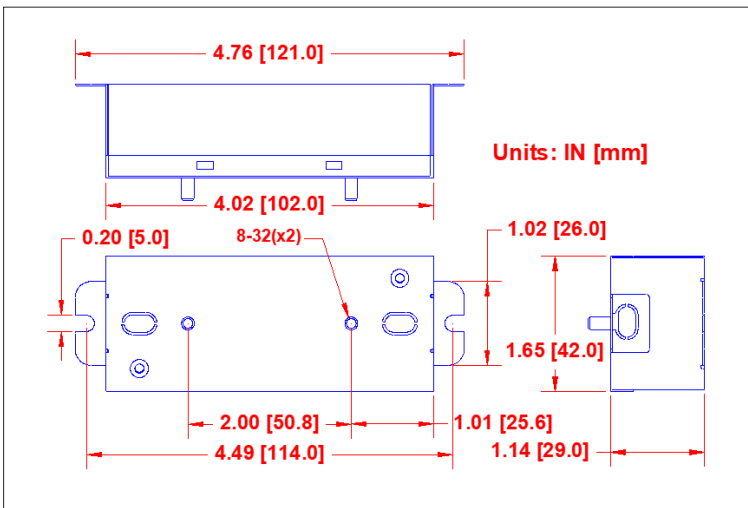
M9 Series : 2.78" x 1.36" x 0.98"



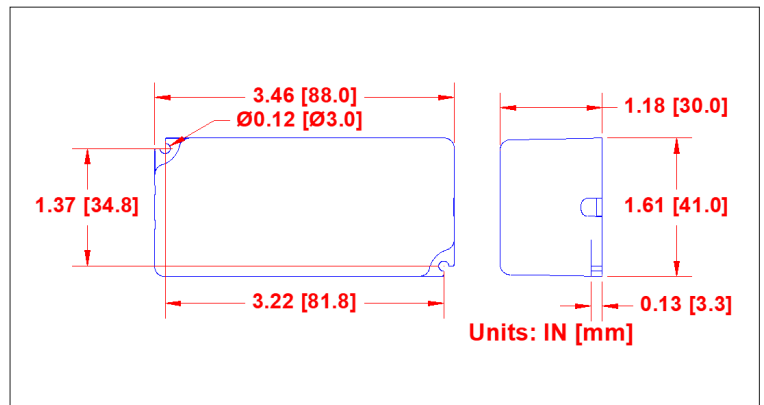
M18 Series : 3.36" x 1.50" x 1.09"



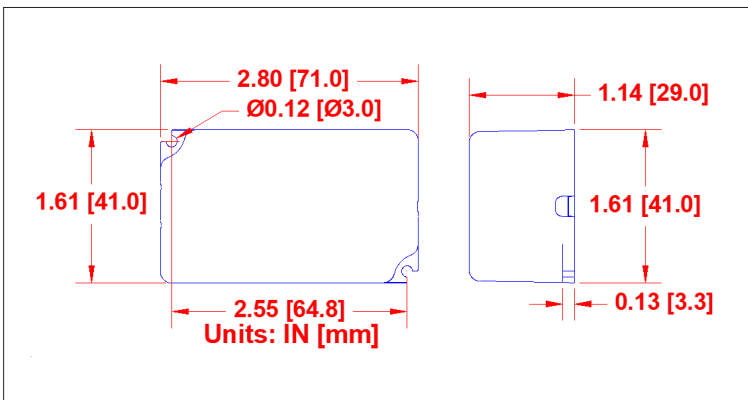
M28-XM & M38-XM Series : 4.76" x 1.65" x 1.14"



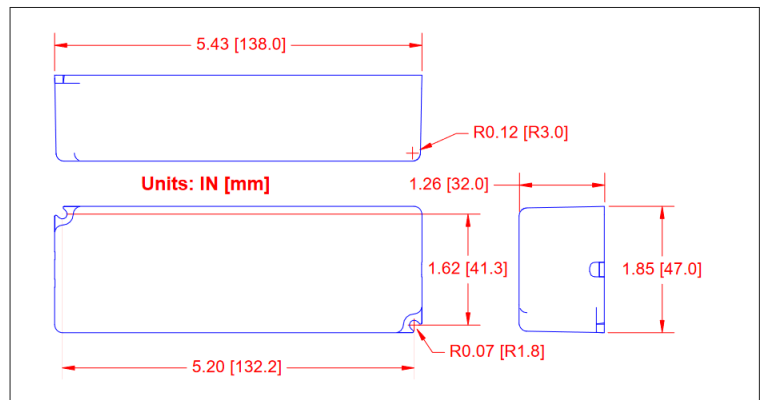
M28-XP & M38-XP Series : 3.36" x 1.61" x 1.18"



M27-XP Series : 2.80" x 1.61" x 1.14"



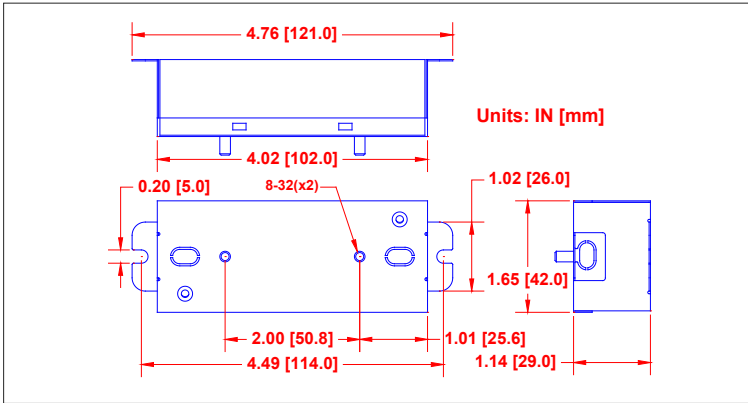
M48-XP Series : 5.43" x 1.85" x 1.26"



# MD Series Dimension (L x W x H) Units: IN [mm]

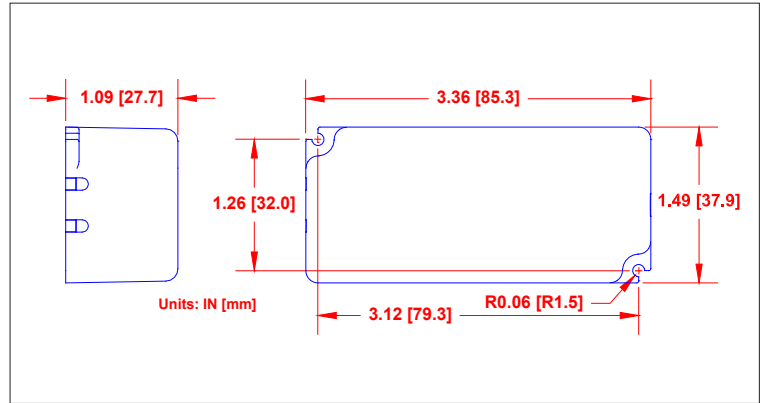
MD22-XM Series: 121 x 1.65 x 29mm

"XM" – Stud-mountable Metal Case / Class P Certified



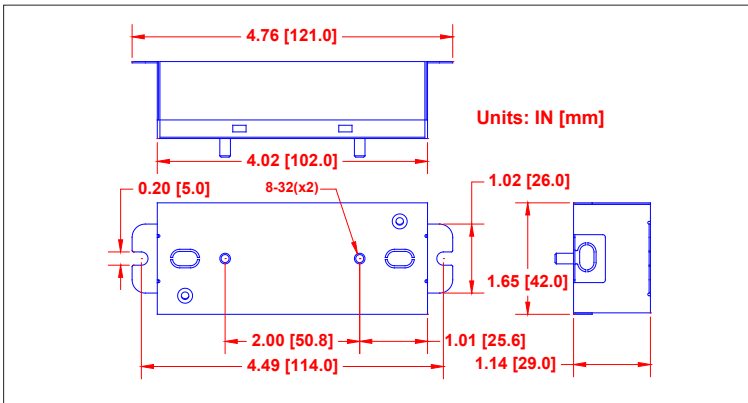
MD22-XM Series: 85.3 x 37.9 x 27.7mm

"XP" – Plastic Case / TL Mark Certified



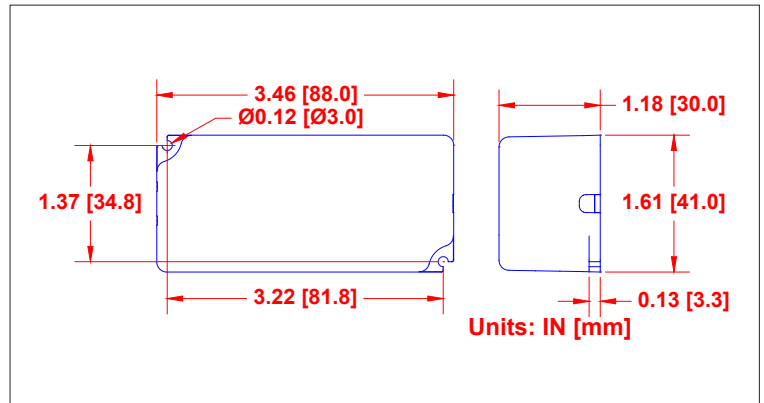
MD42-XM Series: 114 x 42 x 29mm

"XM" – Stud-mountable Metal Case / Class P Certified



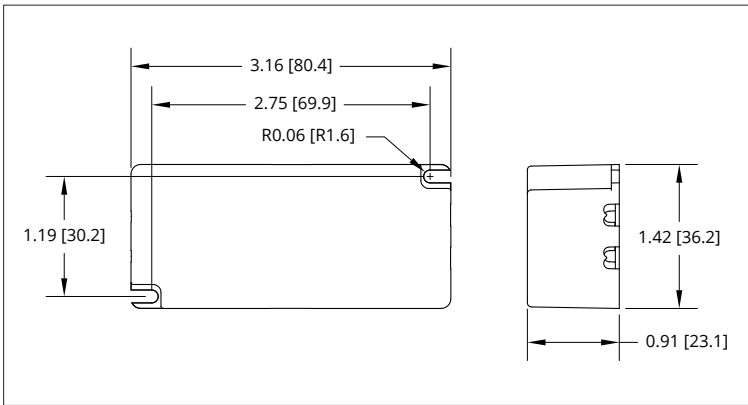
MD42-XM Series: 88 x 41 x 34.8mm

"XP" – Plastic Case / TL Mark Certified

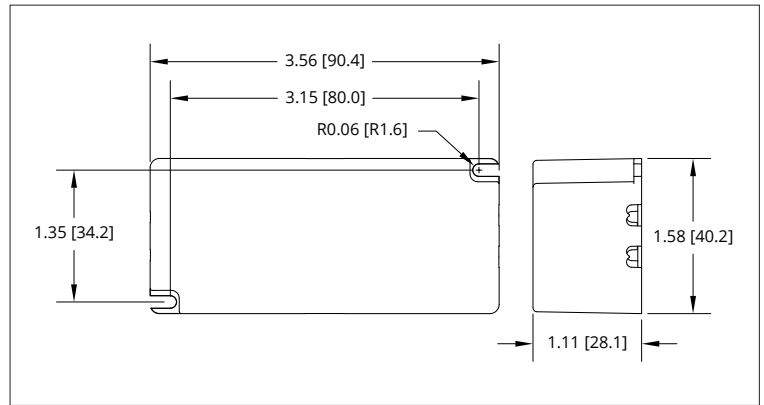


# MDH Series Dimension (L x W x H) Units: IN [mm]

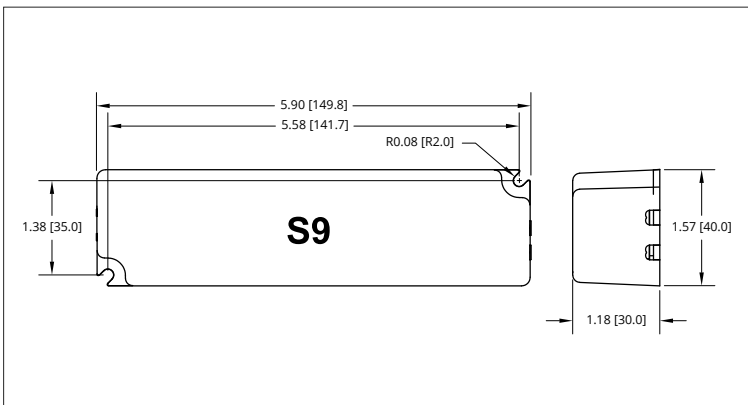
MDH22 : 80.4 x 36.2 x 23.1mm



MDH42 : 90.4 x 40.2 x 28.1mm

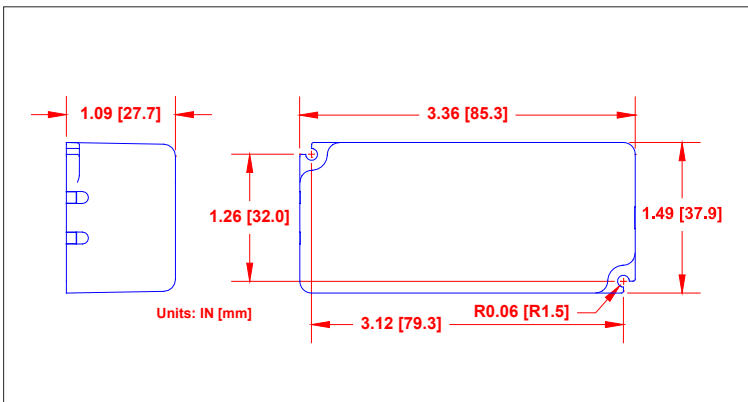


MDH62 : 149.8 x 40 x 30mm

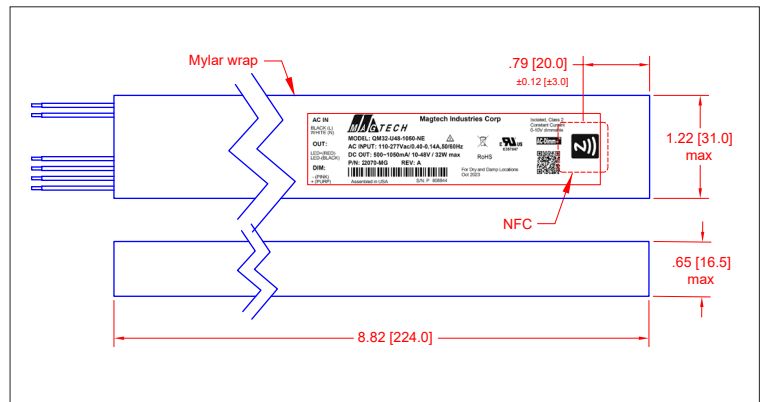


# QM Series Dimension (L x W x H) Units: IN [mm]

QM20 Series: 85.3 x 37.9 x 27.7mm

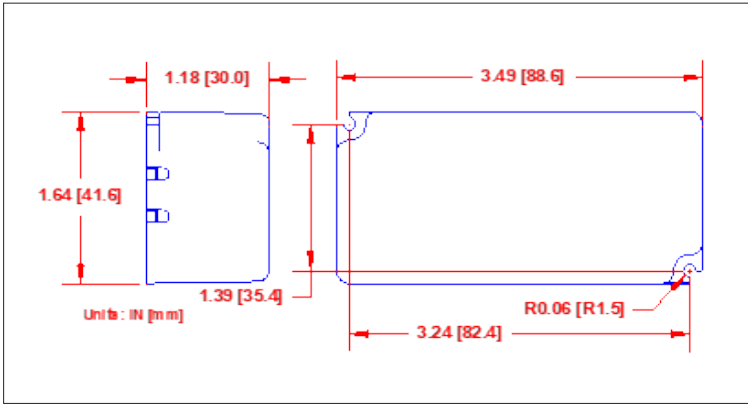


QM32 Series: 224 x 31 x 16.5mm

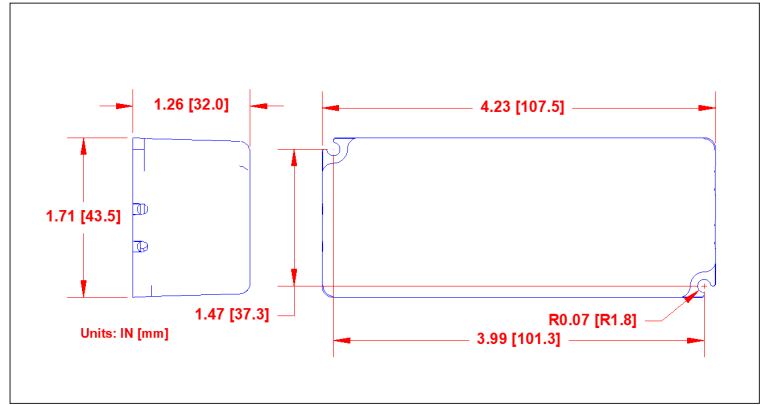


# QM Series Dimension (L x W x H) Units: IN [mm]

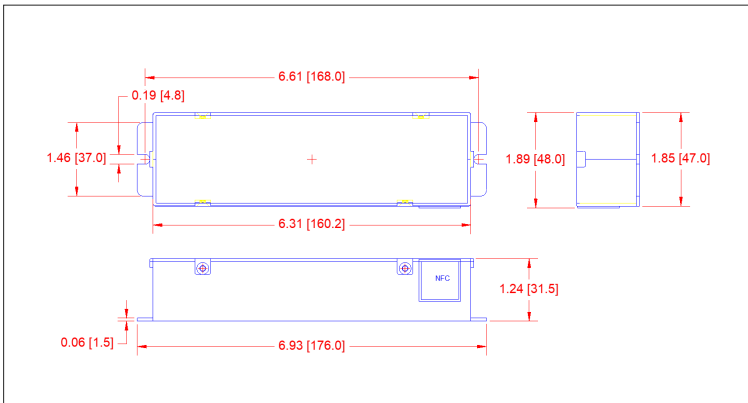
QM40 Series : 88.6 x 41.6 x 30mm



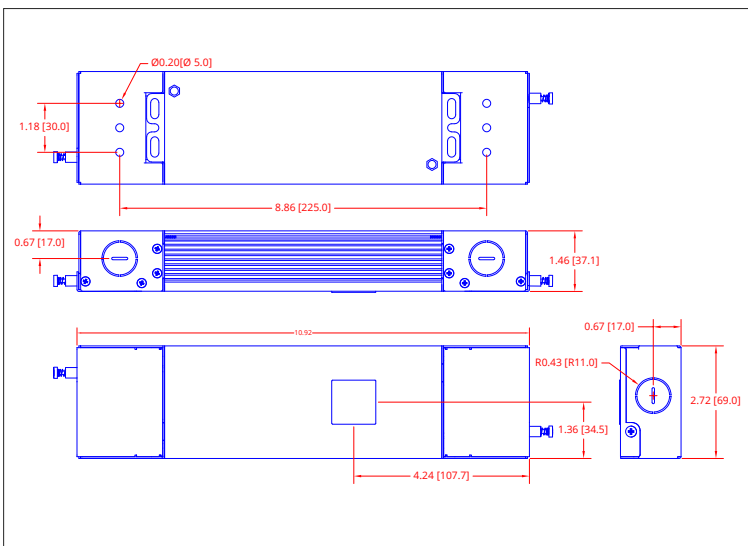
QM50 Series : 107.5 x 43.5 x 32mm



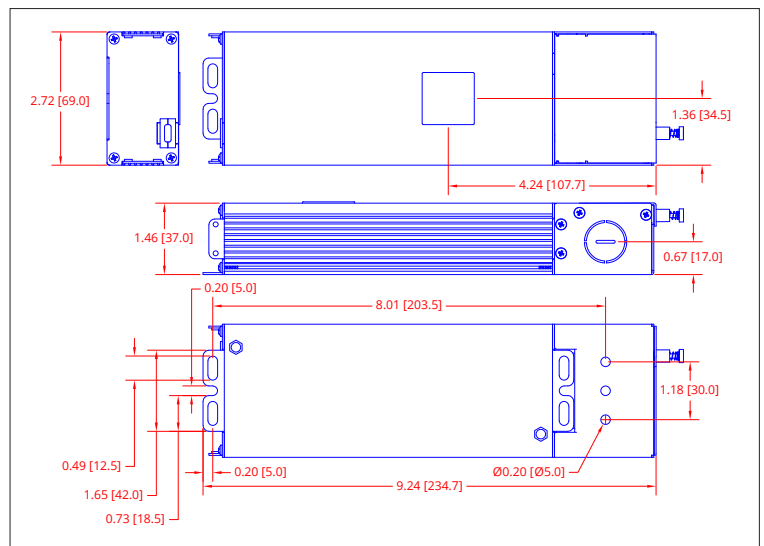
QM70 Series : 168 x 47 x 31.5mm



QM100 Series: QM100-U48z-yyyy-LP, QM100-U24z-LP  
277.36 x 69 x 37.1mm

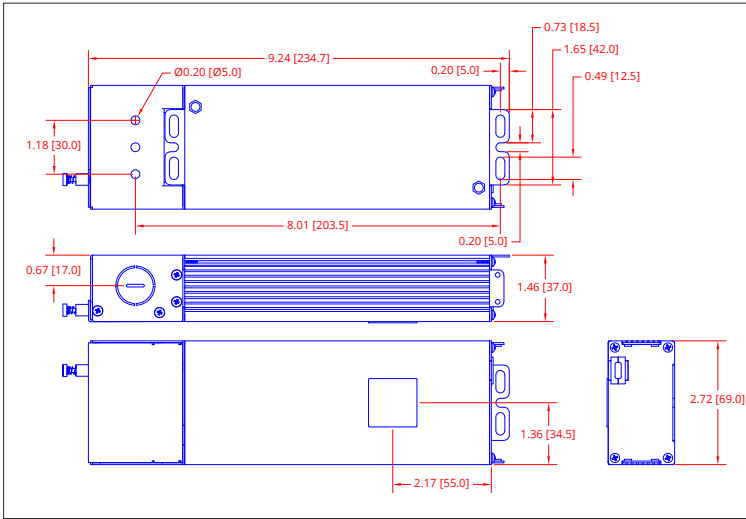


QM100-U48z-yyyy-BM , QM100-U24z-BM  
234.7 x 69 x 37mm

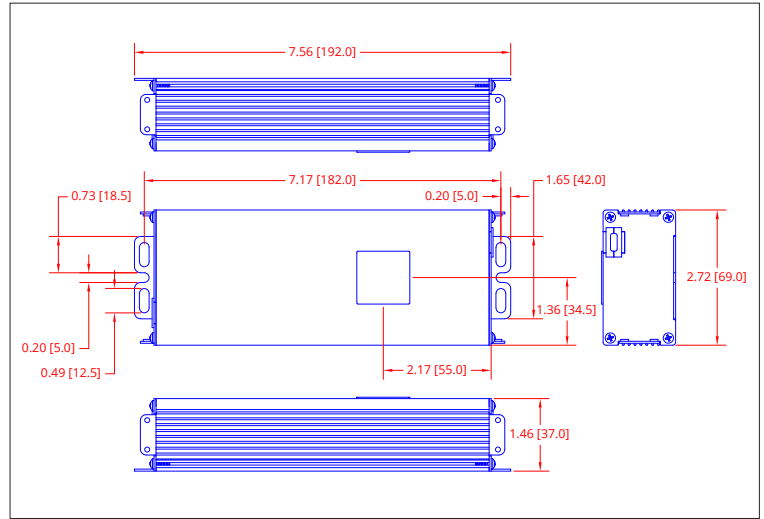


# QM100 Series Dimension (L x W x H) Units: IN [mm]

QM100-U48z-yyyy-MB, QM100-U24z-MB  
234.7 x 69 x 37mm

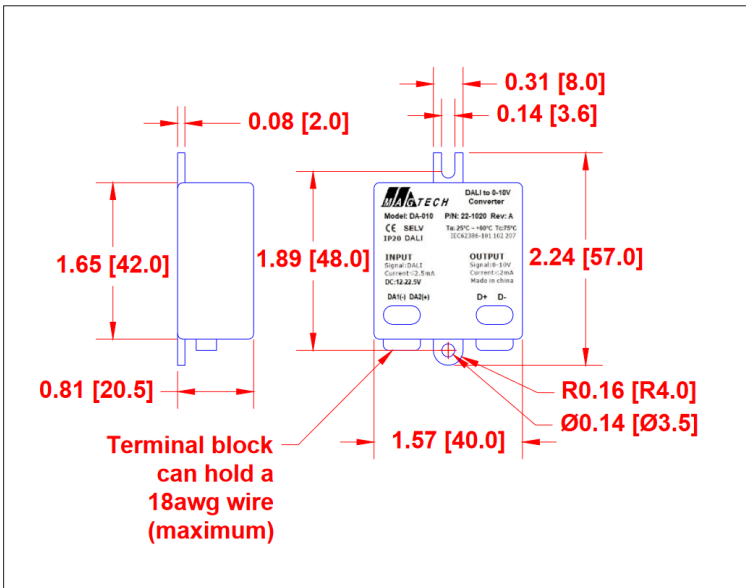


QM100-U48z-yyyy-SB, QM100-U24z-SB  
192 x 69 x 37mm



# DALI Converter Dimension (L x W x H) Units: IN [mm]

DALI-010 Converter: 57 x 40 x 20.5mm

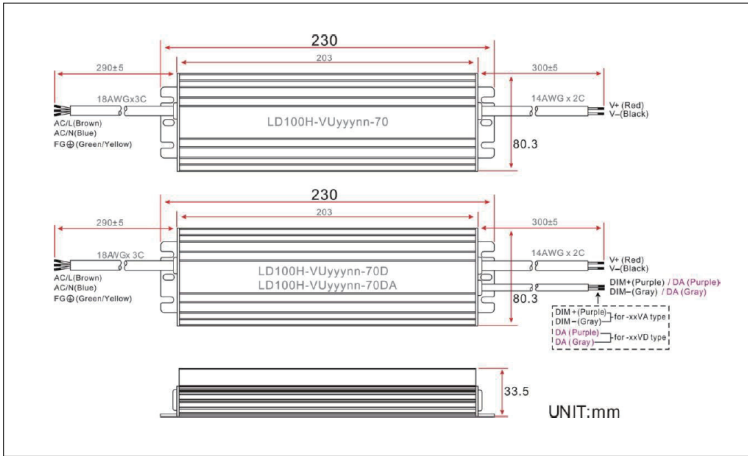


DALI-020 Converter 50 x 45 x 20mm

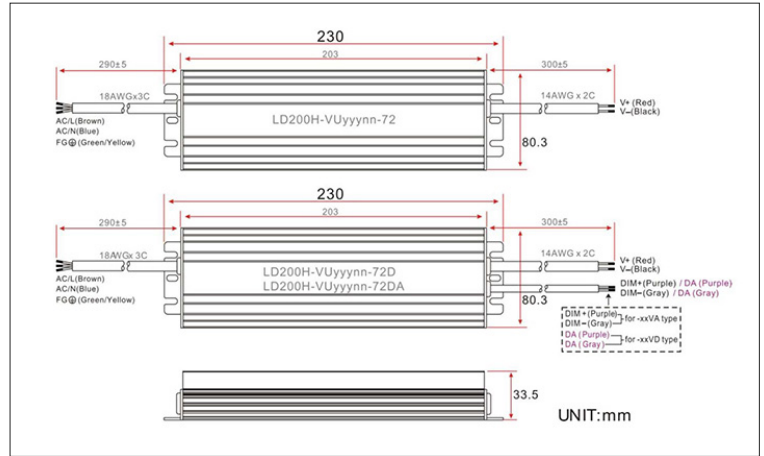


# LD Series Dimension (L x W x H) Units: IN [mm]

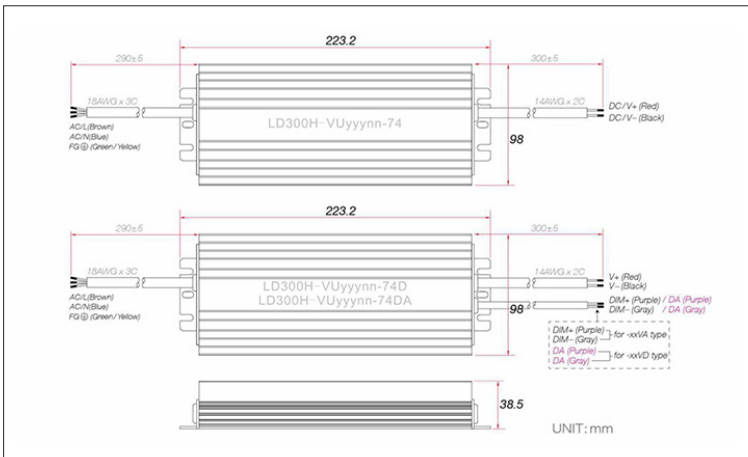
**LD100H : 230 x 80.3 x 33.5mm**



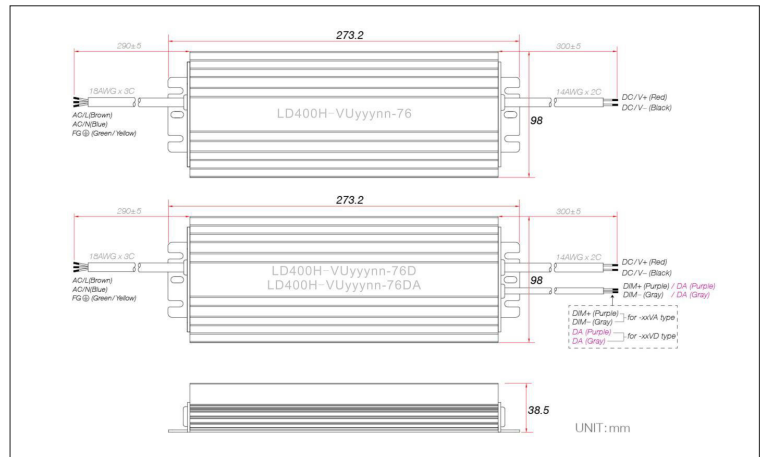
**LD200H : 230 x 80.3 x 33.5mm**



**LD300H: 223.2 x 98 x 38.5mm**



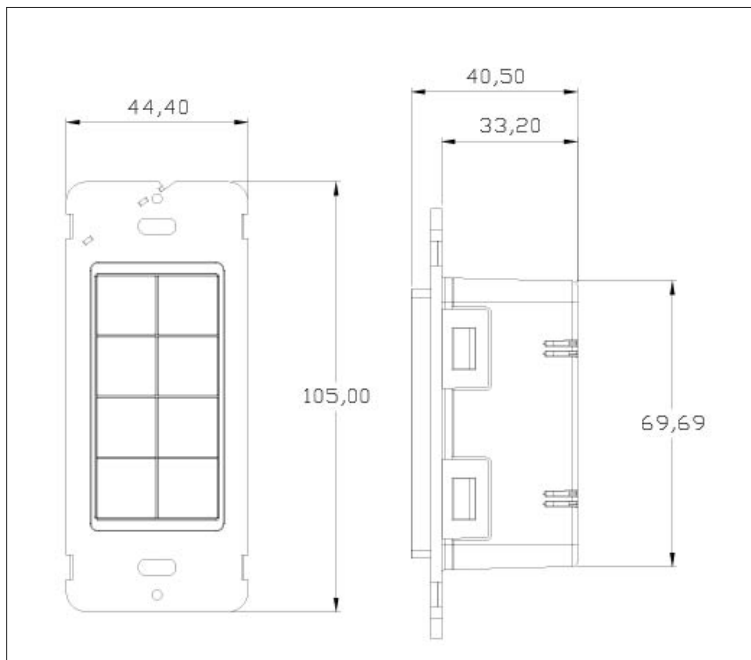
**LD400H : 273.2 x 98 x 38.5mm**



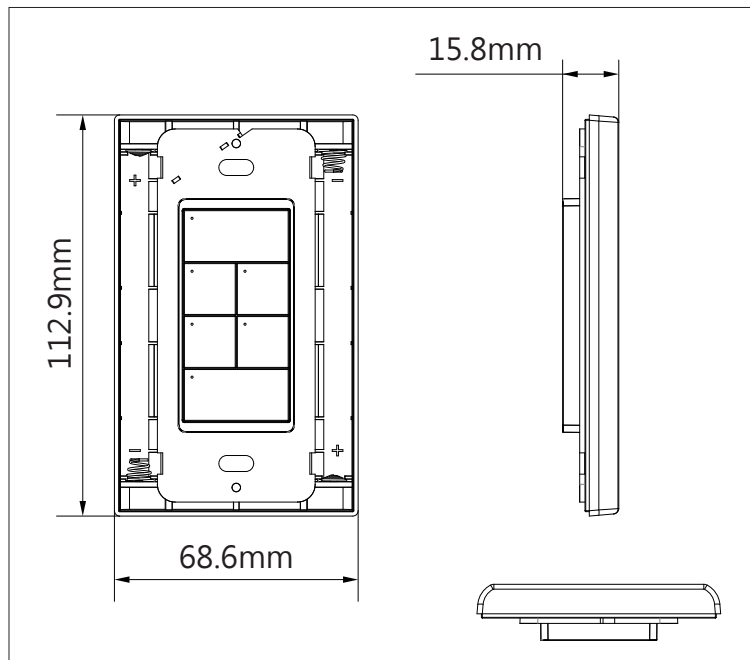


# Atom Wall Switch Dimension (L x W x H) Units: IN [mm]

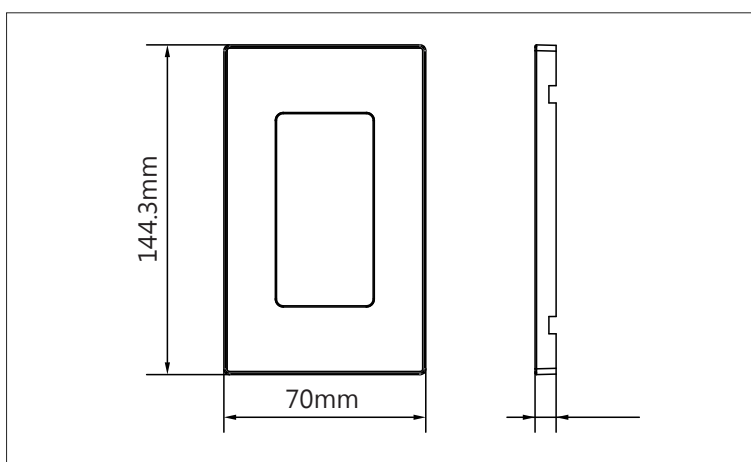
## Standard or Non-neutral



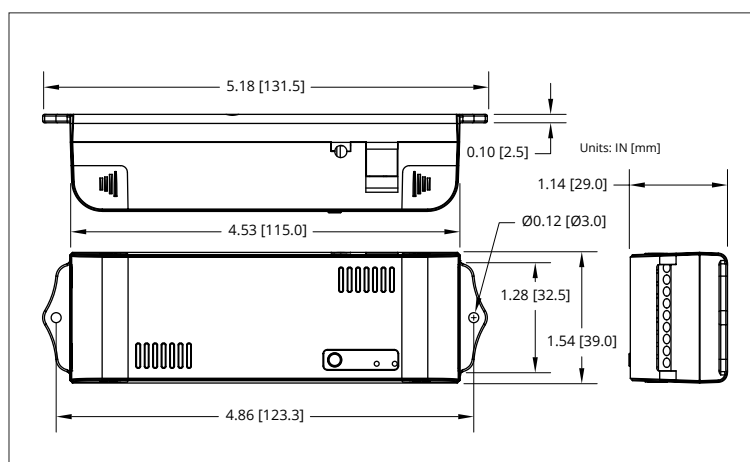
## Battery Version



## Color Face Plate



## ZBA-T001 : 131.5 x 39 x 29mm



For over **35 years** we have taken pride in our great relationships with our customers by providing them with quality services, LED driver products and Wireless Lighting Solutions.

We look forward to being your next lighting partner.

More information visit our website.

**[www.magtechind.com](http://www.magtechind.com)**

Office: (702) 364 - 9998

Fax: (702) 364 - 1562

Email: [csupport@magtechind.com](mailto:csupport@magtechind.com) | [sales@magtechind.com](mailto:sales@magtechind.com)

Address: 5625-A Arville ST. Las Vegas, NV 89118

Monday - Friday | 8AM - 5PM