

Project Name:	
Type:	

# WPL01 Series

Slim LED Wall Pack  
Wireless Reporting Compatible

## PRODUCT FEATURE

### HOUSING

- Architectural, low profile decorative design.
- Die-cast aluminum housing with efficient heat sink.
- Enclosure rated IP65 per IEC 60529, suit for outdoor use.
- UV resistant polycarbonate lens.
- Universal pattern knockouts on back plate for junction box.
- 1/2" Threaded conduit access on top surface.
- Black, white, dark bronze, silver UV resistant powder paint finish.

### ELECTRICAL

- AC 120-277V 50/60Hz operation, class 2 driver.
- Switching power circuit with high power factor and efficiency.
- Test switch and charge indicator.
- Long-life, maintenance-free, rechargeable Ni-Cad battery.
- 24 hours recharge after 90 minutes discharge.

### ILLUMINATION

- SMD 2835 LED, 8pcs, L70 > 50,000 hours, CRI > 70
- Normal EM model deliver 550lm at emergency mode.
- CL (cold weather) model deliver 500lm at emergency mode.

### MOUNTING

- Suitable for wall mount and conduit mount

### WARRANTY

- See [Limited Warranty Policy](#) for more additional information



### LISTING

- UL and cUL listed and meets or exceed all requirement in NFPA 70, NFPA 101 life safety code, suitable for U.S.A and Canada market.
- AC model (general lighting) DLC listed.
- RoHS compliant.

### OPTIONS

- ZD: LynxEM Wireless Report
- CT: self-testing/self-diagnostic
- LED CCT: cold white, 5000K, neutral white, 4000K, warm white, 3000K, cold white and warm white are standard CCT.
- Unit suitable for damp or wet location.
- Normal model Ta range 0°C -50°C
- AC unit Ta range -25°C - 50°C
- CL (cold weather) model Ta range -25°C - 50°C suitable for cold weather.
- PIR option and photocell for energy saving.

## ORDER INFORMATION: EXAMPLE: WPL01-C-ACEM-BLANK-ZD-CL-WH

WPL01	-	-	-	-	-	-	-
MODEL	LED CCT	OPERATION	SENSOR	TEST FACILITY (FOR EM ITEM)	HEAT PAD (FOR EM ITEM)	HOUSING COLOR	
WPL01	<b>C</b> Cold white, 5000K	<b>ACEM</b> General lighting and emergency <b>AC</b> General lighting <b>EM</b> Emergency	<b>BLANK</b> Photo sensor <b>PIR</b> Photo sensor and PIR sensor	<b>BLANK</b> Manual test <b>CT</b> Self-testing/ Self-diagnostics <b>ZD</b> Wireless Reporting LynxEM® Control	<b>BLANK</b> No heat pad <b>CL</b> With head pad For cold weather	<b>AL</b> Silver <b>BK</b> Black <b>DB</b> Dark bronze <b>WH</b> White	
	<b>N</b> Neutral white, 4000K						
	<b>W</b> Warm white, 3000K						

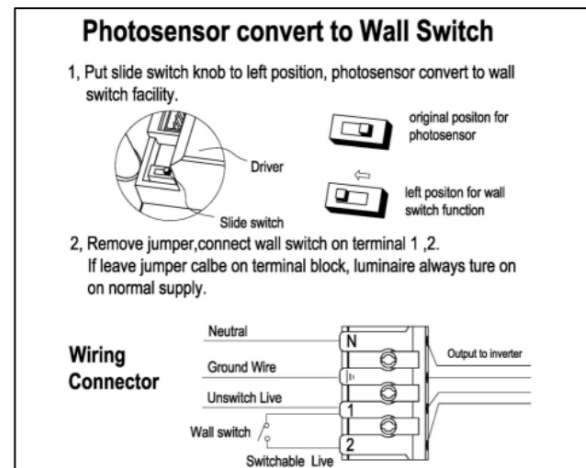
## LUMINAIRE ON AND OFF CONTROL FACILITY

There are 2 versions fixture with different ON/OFF control facility at normal AC supply.

1. Standard (Photocell only) version, luminaire on/off control by photocell.

If ambient Illumination < 10 lux, luminaire turn on automatically, if Illumination > 30 lux, luminaire turn off.

Photocell facility can change to Wall switch control.



Project Name:	
Type:	

# WPL01 Series

Slim LED Wall Pack  
Wireless Reporting Compatible

## 2. Photo-senor & PIR version fixture, luminary control by photocell& PIR.

If ambient Illumination < 10 lux , in addition PIR sensor detect human move, luminaire turn on, luminaire will stay on 1 minute, if PIR sensor do not detect human move, luminaire stay off.

If ambient Illumination >30 lux, luminaire turn off.

PIR detect radius

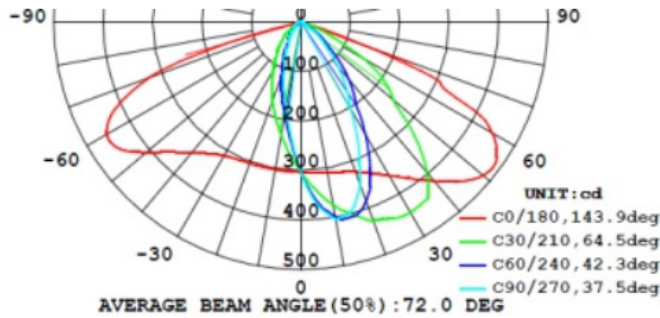
INSTALLATION HEIGHT	RATED DETECT RADIUS
9FT	6.5FT
10FT	8.2FT
11FT	9.8FT

### Function disable instruction

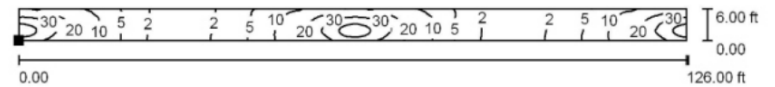
If need disable PIR function, need add one resistor 00mh 2512 pack on PCBA, then luminaire just have photocell function.

If need disable photocell but keep PIR function, just disconnect photocell PCBA.

## EMERGENCY MODE (ACEM MODEL 600LM OUTPUT)



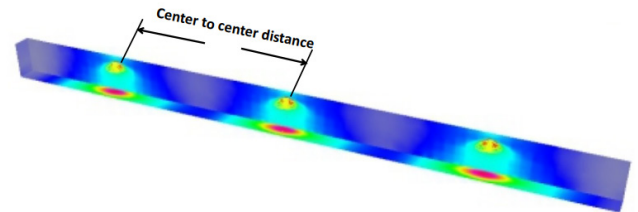
MOUNTING HEIGHT	CENTER TO CENTER DISTANCE
9FT	60FT
10FT	63FT
11FT	65FT



Position of surface in room:  
Marked point: (-63.000 ft, 0.000 ft, 0.000 ft)

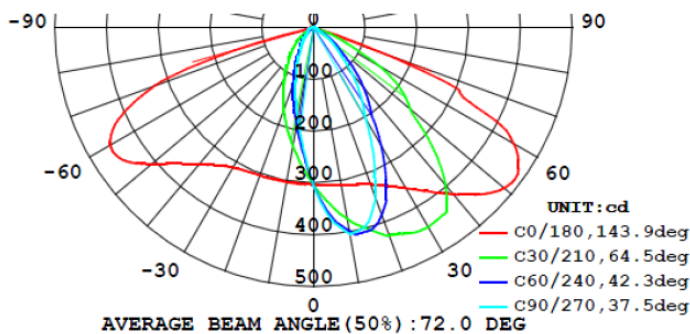
Grid: 128 x 32 Points

$E_{av}$ [lx]	$E_{min}$ [lx]	$E_{max}$ [lx]	$u0$
13	1.18	45	0.092

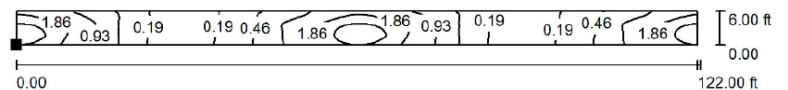


NFPA 101 requires 1.0 foot-candle average and 0.1 foot-candle minimum with a 40:1 maximum/minimum ratio.

## NORMAL MODEL 550LM OUTPUT



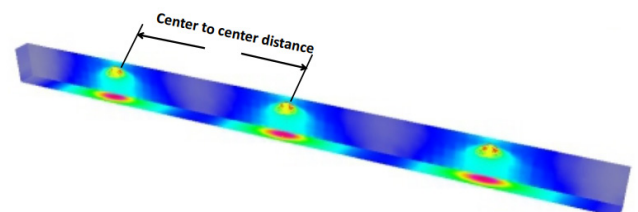
MOUNTING HEIGHT	CENTER TO CENTER DISTANCE
9FT	58FT
10FT	60FT
11FT	60FT



Position of surface in room:  
Marked point: (-61.000 ft, 0.000 ft, 0.000 ft)

Grid: 128 x 32 Points

$E_{av}$ [fc]	$E_{min}$ [fc]	$E_{max}$ [fc]	$u0$
1.03	0.11	3.51	0.107



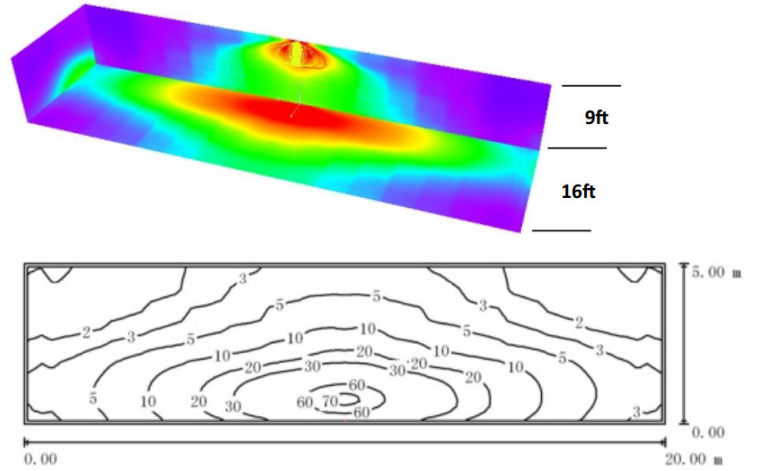
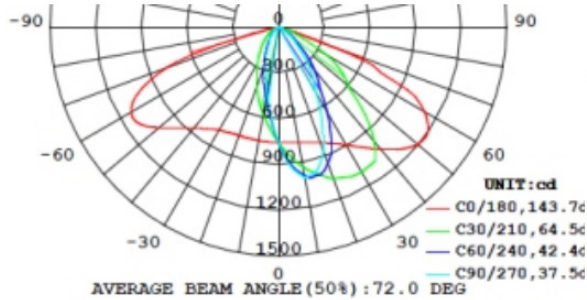
NFPA 101 requires 1.0 foot-candle average and 0.1 foot-candle minimum with a 40:1 maximum/minimum ratio.

Project Name:	
Type:	

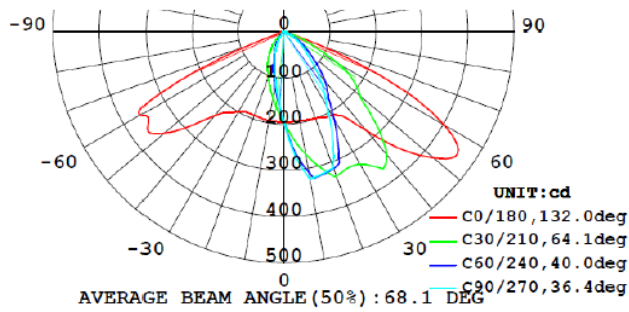
# WPL01 Series

Slim LED Wall Pack  
Wireless Reporting Compatible

## AC MODE



## CL (COLD WEATHER) MODEL 500LM OUTPUT



MOUNTING HEIGHT	CENTER TO CENTER DISTANCE
9FT	57FT
10FT	57FT
11FT	56FT

## PACKAGING

