

LD009D-27

High Power Constant Current LED Driver

PRODUCT FEATURE

- 120V AC input (up to 127 VAC)
- Constant Current design
- Class 2 Power Supply Unit
- Built-in active PFC Function
- Fully isolated plastic case
- Protections: Over current/ Short Circuit
- 2 Years Warranty



WARRANTY

- See [Limited Warranty Policy](#) for more Additional information

SPECIFICATIONS

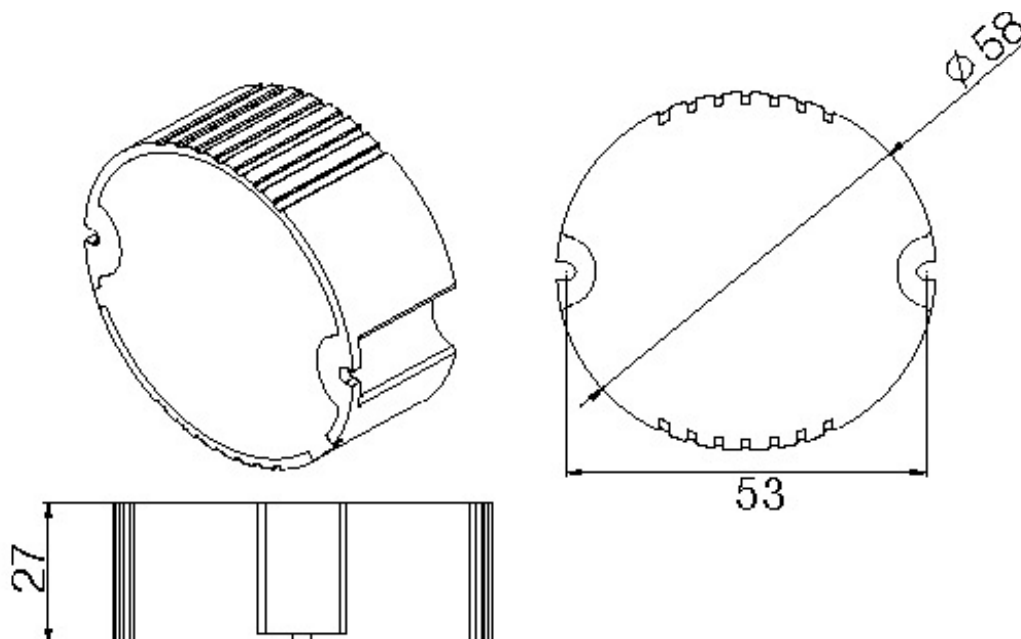


| MODEL NO. | | LD009D-CA07512-27 | LD009D-CA03724-27 | LD009D-CA02536-27 | LD009D-CA02242-27 | LD009D-CA01948-27 |
|--------------|--|---|-------------------|-------------------|-------------------|-------------------|
| INPUT | Voltage Range | 112 – 127VAC; 50Hz/ 60Hz | | | | |
| | AC Current (Max) | 0.11A at 120VAC | | | | |
| | Power Factor | > 0.92 at 120VAC with full load | | | | |
| | Inrush Current | 15A at 120VAC | | | | |
| | Leak Current | < 1mA/ 120 VAC | | | | |
| | | | | | | |
| OUTPUT | DC Voltage Range | 7 – 12V | 13 – 24V | 18 – 36V | 21 – 42V | 24 – 48V |
| | Constant Current Range | 750mA' ±6% | 375mA' ±6% | 250mA' ±6% | 220mA' ±6% | 190mA' ±6% |
| | Rated Max. Power | 9W | 9W | 9W | 9W | 9W |
| | Ripple & Noise (Max.) Note.2 | 3.0 Vp.p | 3.0 Vp.p | 3.0 Vp.p | 3.0 Vp.p | 3.0 Vp.p |
| | Efficiency Note.1 | 72% | 79% | 83% | 81% | 82% |
| | | | | | | |
| PROTECTIONS | Over Current | 110% - 120% Constant Current limiting, Auto-recovery | | | | |
| | Short Circuit | Hiccup mode, recovers automatically after fault condition is removed | | | | |
| ENVIRONMENT | Working Temp. | -10°C – 40 ambient operating at full load (Refer to output load derating curve) | | | | |
| | Working Humidity | 20% - 90% RH non-condensing | | | | |
| | Storage Temp. Humidity | -20 - +80°C, 10% - 90% RH | | | | |
| SAFETY & EMC | Safety Standards | Meet UL8750 refer UL1310* | | | | |
| | EMC Standards Note.3 | Meet FCC PART15 CLASS B | | | | |
| | Withstand Voltage | I/P – O/P: 1.25K VAC | | | | |
| | Isolation Resistance | I/P - O/P:100M ohms/ 500VDC at 25°C | | | | |
| CONNECTION | Input | UL rated, 20AWGx 2C (150mm) | | | | |
| | Output | UL rated, 20AWGx 2C (150mm) | | | | |
| OTHERS | MTBF | 100K hours in. @Ta=25°C | | | | |
| | Dimension | 58 x 58 x 27mm (L x W x H) | | | | |
| | Packing/ Carton | 340 x 340 x 170mm; 100pcs/ 11.0kg | | | | |
| NOTE | 1. All parameters NOT specially mentioned are measured at 230V AC input, rated load and 25°C ambient temperature. 2. Ripple & Noise are measured at 20MHZ of band width oscilloscope and with 01uf & 47uf parallel capacitor. 3. The power supply is considered a component which will be installed a final equipment. The final equipment must be re-confirmed that it still meets EMC directives | | | | | |

LD009D-27

High Power Constant Current LED Driver

MECHANICAL DRAWING



WIRING DIAGRAM

