

# C5 Series

Exit Sign and Exit Combo

## PRODUCT FEATURE

### HOUSING

- Injection molded thermoplastic housing
- Plastic enclosure with 5VA flame retardant
- Compact and decorative design
- Friendly configuration design for quick installation
- Exit letter 6" height and 3/4" stroke, snap in and snap out direction indicator
- Fully rotatable lamps head easy snap in housing
- Black color optional



### ELECTRICAL

- 120/277VAC dual voltage input optional
- Brownout circuit protection for ST/SD fixture
- Battery low voltage protection
- Solid state transfer circuit
- Test switch and battery charging indicator
- Maintenance free Ni-cad battery
- 24 hours recharge, more than 90 minutes discharge

### MOUNTING

- Suitable for wall mount, ceiling mount
- Universal J-box mounting pattern on back plate

### BATTERY

- High temperature type Ni-cad battery
- Battery have to recharge if product keep in stock 9 months
- Details manual refer "BATTERY STOCK AND RECHARGE GUIDLINE".

### ILLUMINATION

- Long life red or green LED lamps provide uniform diffuser illumination
- Standard model lamp head DC3.6V 0.75W, deliver 150lm from whole unit, CCT 5700K
- HO model lamp head DC 3.6V 1.2W deliver 250lm from whole unit, CCT 5700K

### OPTIONS

- Basic model with manual test switch and indicator.
- RC optional with 3.6V 1.5W remote capability
- Self-testing and self-diagnostic optional
- Red and Green color exit sign optional
- LynxEM® wireless testing and reporting system available

### WARRANTY

- See [Limited Warranty Policy](#) for more additional information

### CODE COMPLIANCE

- UL listed and meets or exceed all requirement in NFPA 70, NFPA 101 life safety code, suitable for USA market
- Compliant CEC title 20 efficiency regulations
- Suitable for 10°C - 40°C ambient temperature, suitable for damp location

### RELATED PRODUCTS

🔗 [C1 Series - Exit Sign Combos](#)

🔗 [C2 Series - Exit Sign Combos](#)

🔗 [C3 Series - Exit Sign Combos](#)

🔗 [C4 Series - Exit Sign Combos](#)

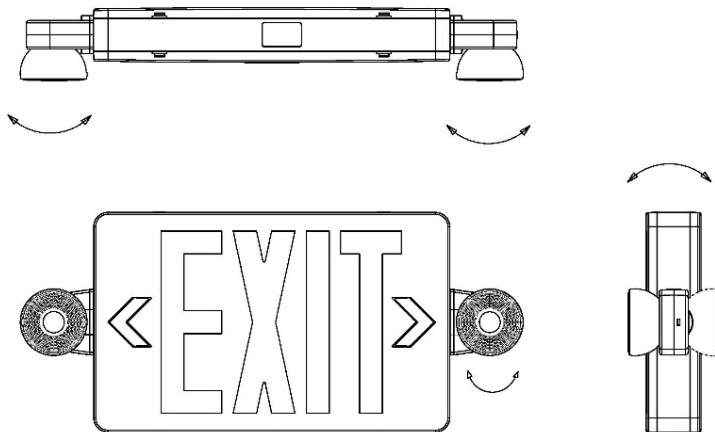
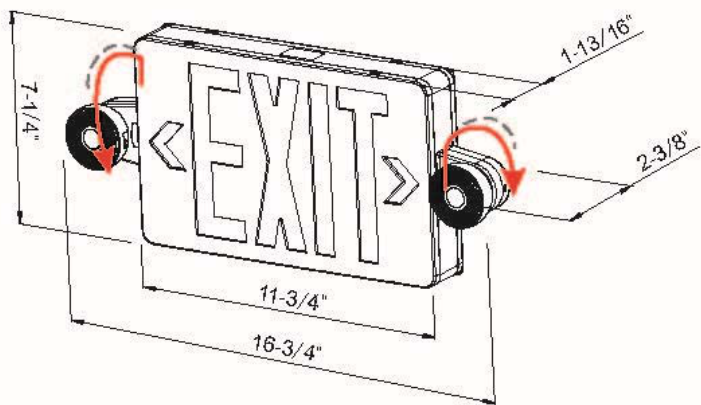
## ORDER INFORMATION: *EXAMPLE: C5-R-BLANK-ZD-W-1*

C5	-		-		-		-		-	
MODEL	LEGEND		OPTION		TEST FACILITY		HOUSING COLOR		INPUT VOLTAGE	
C5 Series	R	Red color	BLANK	Basic model	BLANK	Manual test	W	White	1	120/ 277VAC
	G	Green color	HO	High lumen output	CT	Self-testing/ Self-diagnostics	B	Black		
			RC	Remote capability	ZD	Wireless Reporting LynxEM® Control				

# C5 Series

Exit Sign and Exit Combo

## DIMENSION AND FULLY RETATIONAL LAMP HEAD



## PHOTOMETRIC

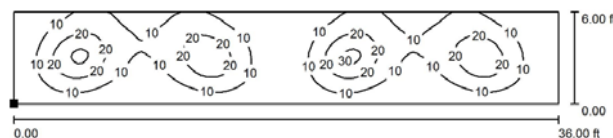
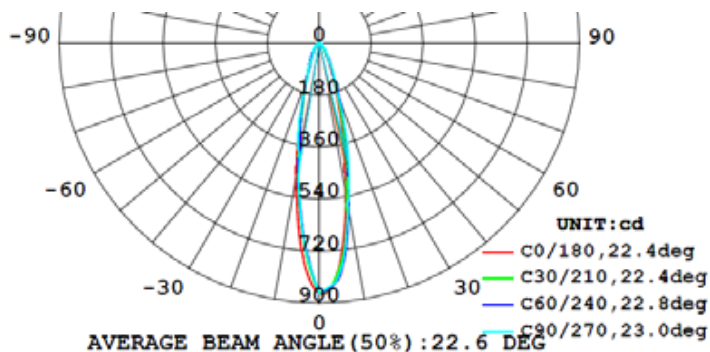
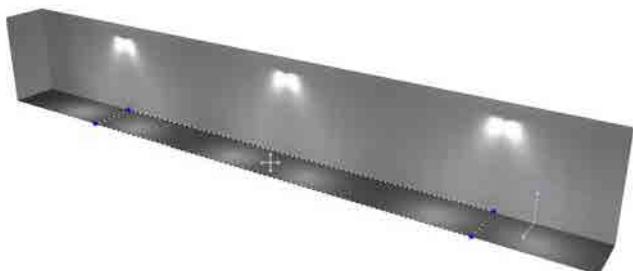
MODEL	LUMEN OUTPUT	SPACING DISTANCE WALL MOUNT 7.5FT HEIGHT	SPACING DISTANCE WALL MOUNT 10FT HEIGHT
C5	150lm	18FT	17FT
C5-HO	250lm	30FT	28FT

Compliant NFPA 101 requires 1.0 foot candle average and 0.1 foot candle minimum with a 40:1 maximum/ minimum ratio

Normal model, 150lm output



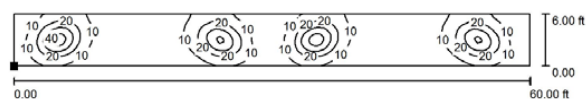
High lumen output model, 250lm output



Position of surface in room:  
Marked point: (12.183 ft, -0.047 ft, 0.000 ft)

Grid: 128 x 32 Points

$E_{av}$  [lx] 12  $E_{min}$  [lx] 3.25  $E_{max}$  [lx] 32  $u0$  0.276



Position of surface in room:  
Marked point: (0.183 ft, 0.000 ft, 0.000 ft)

Grid: 128 x 32 Points

$E_{av}$  [lx] 12  $E_{min}$  [lx] 1.88  $E_{max}$  [lx] 46  $u0$  0.161

# C5 Series

Exit Sign and Exit Combo

Project Name:	
Type:	

## REMOTE HEAD



### EXH-701-LO

- Single remote head, 3.6V 0.75W delivers 70lm per unit
- Operation temperature range 10°C...+ 40°C suitable for damp location
- UL, cUL listed



### EXH-702-LO

- Dual remote head, 3.6V 1.5W delivers 140lm per unit
- Operation temperature range 10°C...+ 40°C suitable for damp location
- UL, cUL listed

## PHOTOMETRIC

MODEL / FEATURE	C5	C5 – CT
Brownout transfer	n/a	✓
Battery low voltage disconnect	✓	✓
Overload disconnect	n/a	✓
Short circuit load disconnect	n/a	✓
Solid State transfer	✓	✓

## PACKAGING

W 386MM x D 377mm x H 180MM

Q'TY : 6 PCS  
N.W : 7.4 KGS  
G.W : 8.7 KGS  
MEA'S : 1.1 CUFT

