

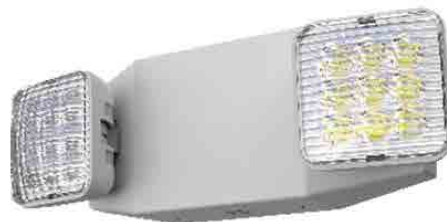
M6 Series

LED Emergency Lighting

PRODUCT FEATURE

CONSTRUCTION

- Constructed from injection-molded engineer-grade
- 5VA flame retardant thermoplastic
- Black color optional
- Friendly configuration design for quick installation
- Two fully adjustable, glare-free LED lighting heads
- Universal J-boc mounting pattern



ELECTRICAL

- 120 / 277VAC dual voltage 50 / 60Hz
- Charge 24 hours, discharge 90 minutes
- Trickle charge after battery fully charge
- Battery over discharge protection
- Solid-state transfer circuit
- Test switch/ Charge indicator light
- RC version remote capability option
- Self-testing & Self-diagnostics optional

ILLUMINATION

- Emergency lamps use long-lasting, high efficiency white LEDs
- Basic model provide 240lm and high lumen version provide 440lm discharge

SELF-TESTING, SELF-DIAGNOSTICS

- Continuously monitor the AC power, battery supply voltage, changing circuit. The multicolor LED indicator light will indicate failure and adjust when it has been corrected.
- Self-test the unit for one minutes every month and 90 minutes every year

INSTALLATION

- Suitable for wall mount and ceiling mount

EMERGENCY OPERATION

- Upon failure on the normal utility power, an internal solid state transfer which automatically provides uninterrupted emergency operation for at least 90 minutes.
- The fully automatic solid-state, two-rate charger initiator battery charging to recharge a discharged battery in 24 hours.

CODE COMPLIANCE

- UL and cUL listed and meet or exceed all requirement in NFPA 70, NFPA 101 life safety code, suitable for USA and Canada market
- Suitable for 10°C - 40°C ambient temperature, suitable for damp location
- Comply CEC title 20 for high end version

PHOTOMETRICS-BASIC MODEL

- Standard mounting height of 7.5ft illuminates 1 foot candle (FC) over a distance of 28ft on 3ft path of egress and 25ft on 6ft path of egress.

WARRANTY

- See [Limited Warranty Policy](#) for more additional information

RELATED PRODUCTS

[M1 LED Emergency Lighting](#)

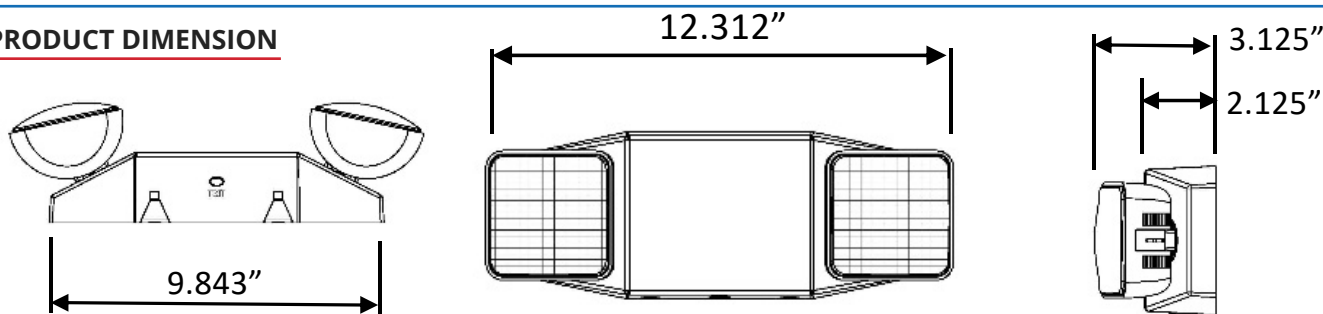
[M2 LED Emergency Lighting](#)

[M3 LED Emergency Lighting](#)

[M4 LED Emergency Lighting](#)

[M5 LED Emergency Lighting](#)

PRODUCT DIMENSION



ORDER INFORMATION: EXAMPLE: M6-D-BLANK-BLANK-CT-W

M6	-		-		-		-		-	
MODEL	INPUT VOLTAGE		OPTIONS		BATTERY		TEST FACILITY		HOUSING COLOR	
M6	D	Dual voltage input (120/277VAC)	BLANK	Basic model	BLANK	Ni-cad battery	BLANK	Manual test	W	White
			RC	Remote capability			CT	Self-testing / Self-diagnostics (for high end)	B	Black
			HO	High lumen output						

M6 Series

LED Emergency Lighting

MODEL LIST AND ELECTRICAL RATING

Project Name:
Type:

MODEL	TEST FACILITY	BATTERY	RECHARGE TIME	EMERGENCY DURATION	INPUT		OUTPUT		
					VOLTAGE FREQUENCY	POWER CONSUMPTION	LAMP HEAD	LUMINOUS FLUX	REMOTE CAPABILITY
M6D	Manual test	Ni-cad battery HT 3.6V 1000mA	24 hours	>90 minutes	120/277 50/60	0.8W	1W *2PCS	240lm	N/A
M6D-RC	Manual test	Ni-cad battery HT 3.6V 1000mA 2pcs	24 hours	>90 minutes	120/277 50/60	1.0W	0.9W *2PCS	240lm	3.6 1.5W max
M6D-HO	Manual test	Ni-cad battery HT 3.6V 1000mA 2pcs	24 hours	>90 minutes	120/277 50/60	1.0W	2W *2PCS	440lm	N/A
M6D-CT	Self-testing	Ni-cad battery HT 3.6V 1000mA	24 hours	>90 minutes	120/277 50/60	1.2W	1W *2PCS	240lm	N/A
M6D-RC-CT	Self-testing	Ni-cad battery HT 3.6V 1000mA 2pcs	24 hours	>90 minutes	120/277 50/60	1.4W	0.9W *2PCS	240lm	3.6 1.5W max
M6D-HO-CT	Self-testing	Ni-cad battery HT 3.6V 1000mA 2pcs	24 hours	>90 minutes	120/277 50/60	1.4W	2W *2PCS	440lm	N/A

NOTES

M5-RC two batteries in parallel

M5U-LFP-CT compliant CEC title 20 efficiency regulations, Circle BC

M5-HO two batteries in parallel

M5-HO without single lens option because of heat issues

CIRCUIT FEATURE

MODEL / FEATURE	M6D	M6D-CT
Brownout transfer	n/a	✓
Battery low voltage disconnect	✓	✓
Overload disconnect	n/a	✓
Short circuit load disconnect	n/a	✓
Solid state transfer	✓	✓

REMOTE HEAD



EXH-701-LO

- Single remote head, 3.6V 0.75 delivers 70lm per unit
- Operation temperature range 10°C... + 40° suitable for damp location
- UL, cUL listed



EXH-702-LO

- Dual remote heads, 3.6V 1.5W
- Deliver 140lm per unit
- Operation temperature range 10°C... + 40° suitable for damp location
- UL, cUL listed

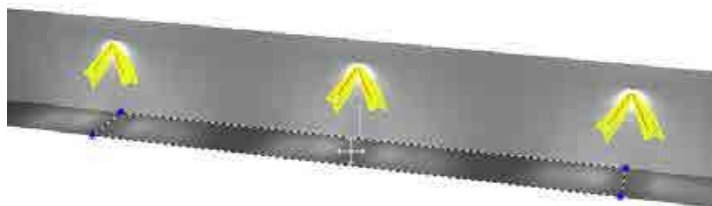
Project Name:	
Type:	

PHOTOMETRIC - Wall mounting height 7.5ft / 10ft

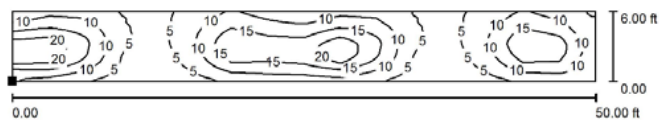
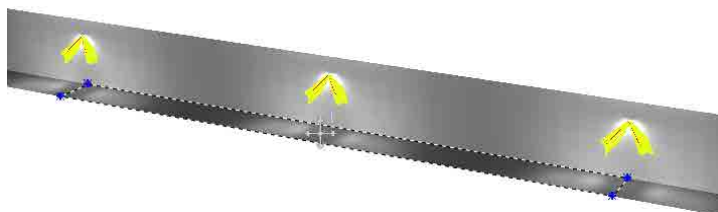
Compliant NFPA 101 requires 1.0 foot-candle average and 0.1 foot-candle minimum with a 40:1 maximum/minimum ratio.

MODEL	LUMEN OUTPUT	SPACING DISTANCE WALL MOUNT 7.5FT HEIGHT	SPACING DISTANCE WALL MOUNT 10FT HEIGHT
M6D	240lm	25ft	23ft
M6D-HO	440lm	42ft	40ft

M6D Illuminance



M6D-HO Illuminance

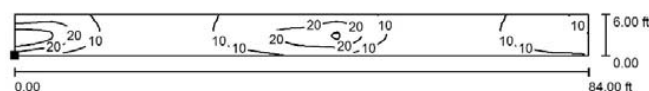


Position of surface in room:
Marked point: (-25.000 ft, 0.000 ft, 0.000 ft)

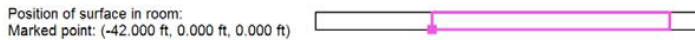


Grid: 16 x 128 Points

E_{av} [lx]	E_{min} [lx]	E_{max} [lx]	u_0
11	1.95	26	0.183



Position of surface in room:
Marked point: (-42.000 ft, 0.000 ft, 0.000 ft)



Grid: 16 x 128 Points

E_{av} [lx]	E_{min} [lx]	E_{max} [lx]	u_0
11	1.09	40	0.099

PACKAGING - 420mm x 360mm x 380mm (WxDxH)

MODEL	:	M6D
Q'TY	:	12 PCS
N.W	:	6.2 KGS
G.W	:	8.2 KGS
MEA'S	:	2 CUFT

