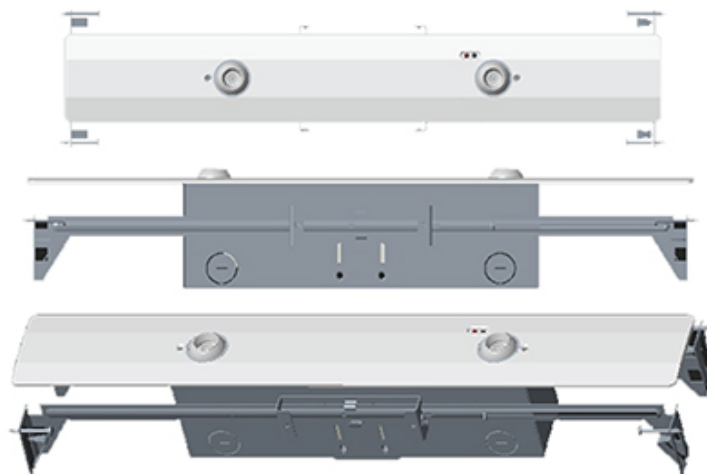


REM-8000

Emergency Lighting

PRODUCT FEATURE

- Recessed mounting design
- High temperature long life Ni-MH battery
- Suitable for damp location
- Remote capability design with additional battery
- 30 degree beam angle
- Full angle adjustable lamp head
- Extrusion aluminum alloy trim plate
- Self-testing / Self-diagnostic function available
- Slim type design



TECHNICAL SPECIFICATION

Rated Power Supply	:	120/277 VAC 60Hz or 120/347 VAC 60Hz
Charge Time	:	24 hours
Discharge duration	:	1.5 hours
Test facility	:	Manual test
Mounting	:	Recessed mounting
LED	:	High power LED for lamp head
Luminance of safety sign	:	Mett UL 924
Ambient temperature	:	10°C - 40°C, suitable damp location
Insulation Class	:	Class I
Certification	:	UL 924

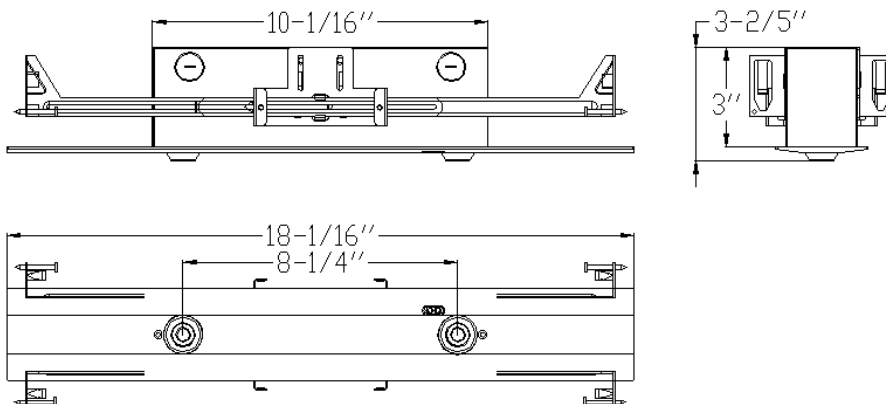
RELATED PRODUCTS

- ◊ [EXL-1960 Emergency Lighting](#)
- ◊ [REM8000 Emergency Light](#)
- ◊ [RCEL800 Edge-li Combo](#)
- ◊ [S3 Series - Exit Sign](#)

WARRANTY

- See [Limited Warranty Policy](#) for more additional information

PRODUCT DIMENSION



ORDER INFORMATION: EXAMPLE: REM-800-BLACK-WH-CT-HO-RC

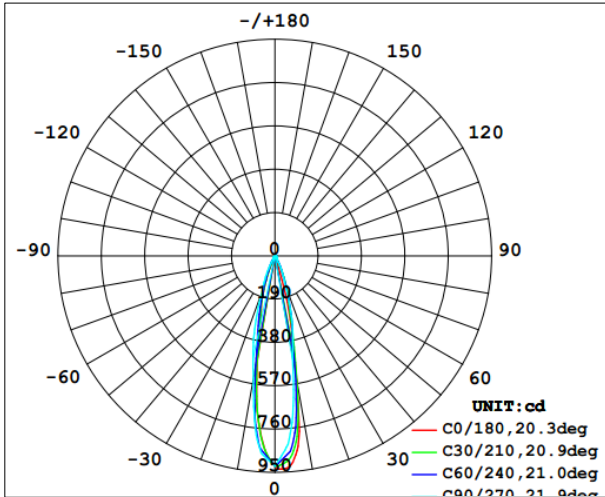
REM-8000	-		-		-	-		-	
MODEL	VOLTAGE		TRIM PLATE FINISHED		SELF-DIAGNOSTICS	BATTERY CAPACITY		REMOTE CAPABILITY	
REM-8000	Black	120/277V	AL	Aluminum	CT	Blank	3.6V 1800mAh 250Lm output	RC	3.6V max. 3W remote capability
	2	120/347V	WH	White		HO	3.6V 2500mAh 400Lm output		
			BK	Black					

REM-8000

Emergency Lighting

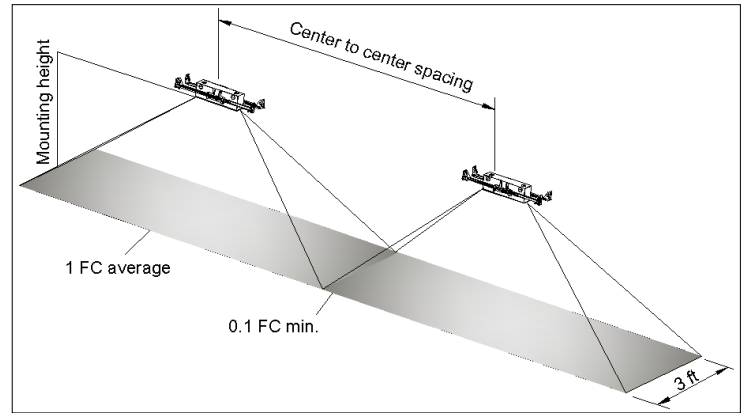
Project Name:	
Type:	

LUMINOUS INTENSITY DISTRIBUTION



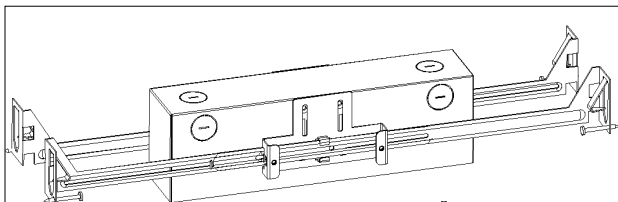
CENTER TO CENTER SPACING

NFPA 101 requires 1.0 foot-candle average and 0.1 foot-candle minimum with a 40:1 maximum/minimum ratio. The corridor used is 100 feet long, 9 feet ceiling with a 6 feet wide walkway and 3 feet path of egress. The reflectance are 80% ceiling, 50% walls and 20% floor. The fixture mounting height is 7.5 feet.

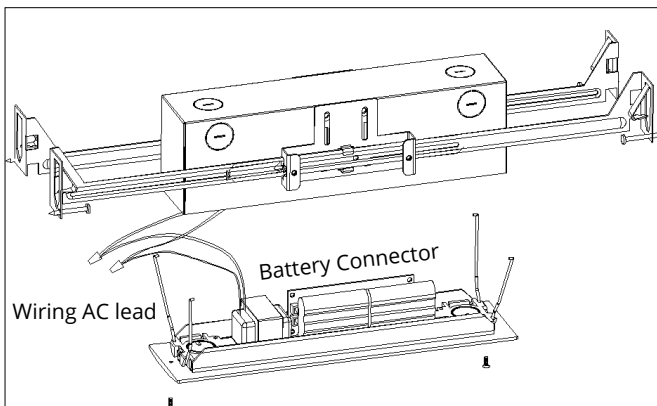


No.	MODEL	SPACING @ 7.5 FEET MOUNTING HEIGHT	SPACING @ 10 FEET MOUNTING HEIGHT
1	REM-8000-X	24 feet	25 feet
2	REM-8000-X-HO	30 feet	30 feet

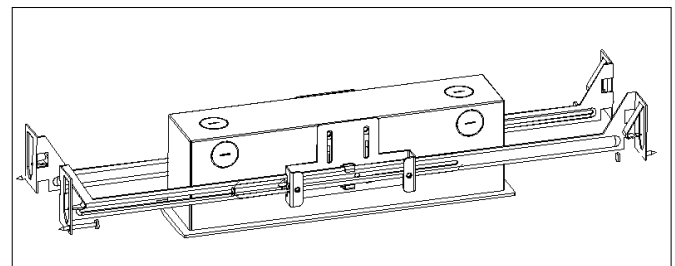
PRODUCT ASSEMBLY EXPLODED



Step1: Install canopy to junction box.



Step2: Separate trim module and wiring AC lead, connect battery connector to PCBA



Step3: Push the unit back to the junction box

REM-8000

Emergency Lighting

Project Name:	
Type:	

PACKAGING

INNER BOX : 518x140x100mm
 CARTON BOX : 535x295x320mm
 Q'TY : 6 PCS
 N.W : 8.85 KGS
 G.W : 10.10 KGS
 MEA'S : 1.80 CUFT

